

Tata Steel Tubes 20" Mill, Hartlepool Collection Plan

Loading:

Monday – Friday:
0600-2200
Booking Slot System

PPE Requirements:



Additional Information:



Reporting/Arrival:



On arrival stop at weighbridge for tare weight ticket



STOP at Rail Crossing if lights are flashing. Park vehicle outside warehouse

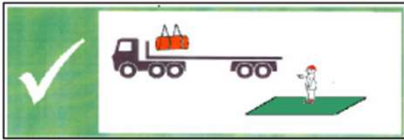


Report to drivers reception



When instructed reverse into loading bay

Loading/Securing:



Stand in green area during loading

LC 2000 daN or higher



No climbing in trailer allowed



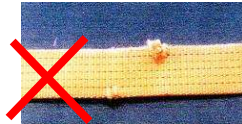
1. Close roof from ground



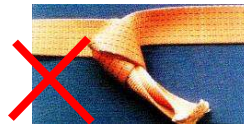
2. Close curtains



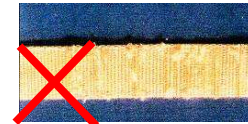
NO CUTS



NO KNOTS



NOT WORN



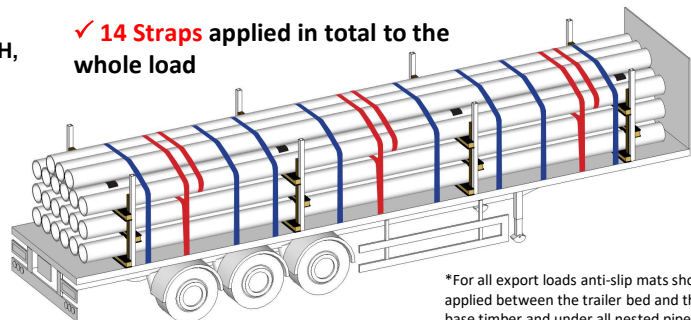
LOADS MUST BE SECURED IN THE LOADING BAY – PLEASE HAVE STRAPS READY BEFORE ENTERING THE BAY

Loose Tubes – Rounds, Squares and Mixed

IF USING A FLATBED TRAILER HEADBOARD HEIGHT MUST BE 1.5M

14 X LC 2000 daN (minimum) STRAPS
8 X STANCHION POSTS – 4 DOWN EACH SIDE OF 1.5M HIGH,
MINIMUM CROSS-SECTION 80 X 80 X 4MM

✓ 14 Straps applied in total to the whole load



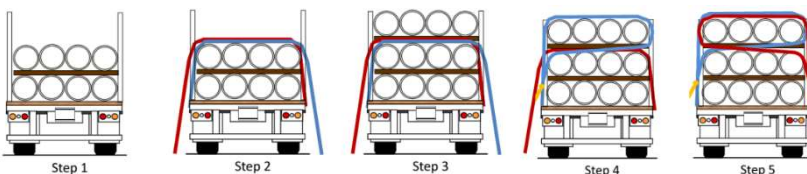
✓ 3 pairs of opposing loops applied to the top layer

✓ 8 over the top straps applied to the whole load

*For all export loads anti-slip mats should be applied between the trailer bed and the base timber and under all nested pipes

**On Intermodal loads anti-slip mats must be used on the top and bottom sides of all timbers

Method for applying Opposing Loops



This document displays the minimum recommended restraints. Every driver has the right to apply additional restraints.