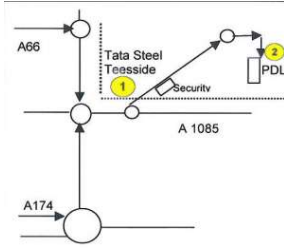


Loading:
Monday – Friday 0600-1800
**POST CODE: TS10
5QW**



Reporting/Arrival:



LACKENBY MAIN ENTRANCE



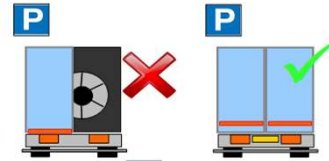
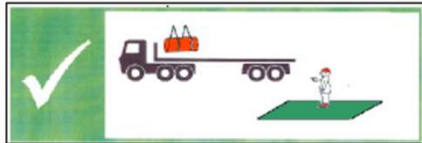
INDUCTION PRAIRIE 4 OFFICE



LOADING PRAIRIE

Loading/Securing:

Stand in **GREEN** area during loading



DOORS MUST BE KEPT CLOSED WHEN DRIVING ON SITE

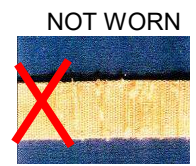
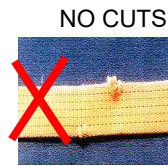


MIN X 13



Max X 65

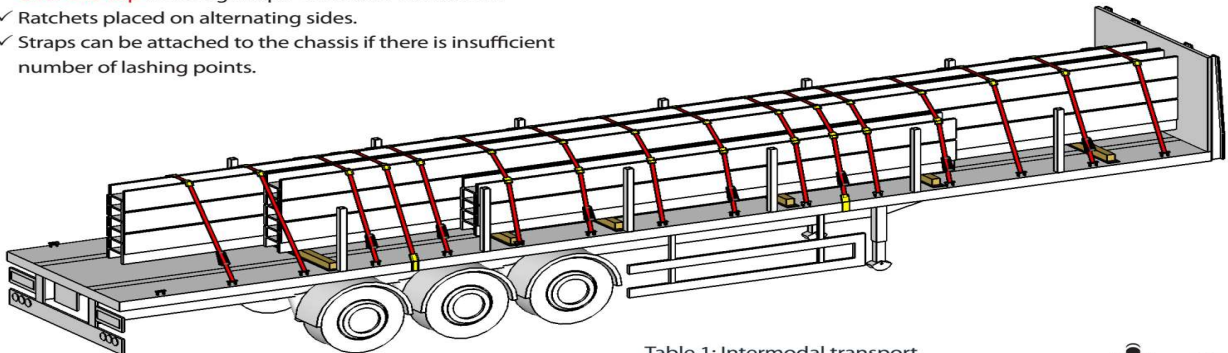
Straps LC 2500 daN



Apply partial load restraint then transit to strapping area near Prairie Office to apply straps and edge protection. NO CLIMBING USE PLATFORM PROVIDED!

3. Overview of restraint system

- ✓ Pyramid load build - see Section 4.
- ✓ **Over-the-top** webbing straps - see Table 1 or Table 2.
- ✓ Ratchets placed on alternating sides.
- ✓ Straps can be attached to the chassis if there is insufficient number of lashing points.



**Table 1: Intermodal transport (road, ferry and rail).
Number of straps required.**



Load	LC 2000 daN	LC 2500 daN	LC 5000 daN
15-20 t	11	9	5
20-25 t	14	11	6
25-28 t	16	13	7

This Load Restraint Guideline is designed to be compliant with the forces stated in EN 12195-1:2010 and VDI 2700.