

**Loading:**

Monday – Friday  
0600-1800hrs

**PPE Requirements:**



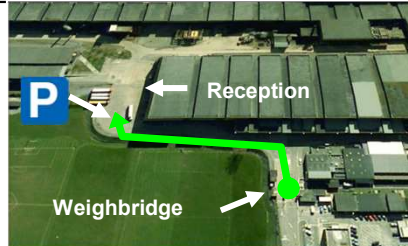
**Additional Information:**



**Reporting/Arrival:**



On arrival stop at weighbridge for tare weight ticket



Park vehicle outside warehouse



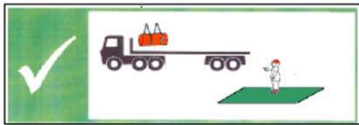
Report to drivers reception



When instructed drive forwards into loading bay

**Loading/Securing:**

Stand in green area during loading



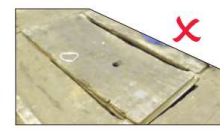
Minimum 12 securing points on each side 24 Total



Well boards in good condition

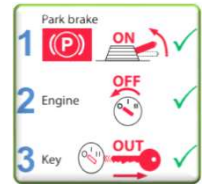


Acceptable well-board condition.

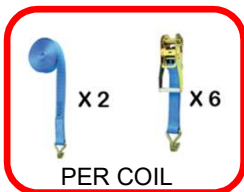


Unacceptable well-board condition.

Vehicle movement prevention



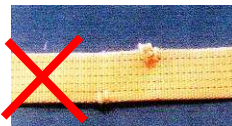
Minimum 12 Straps LC 2000 daN



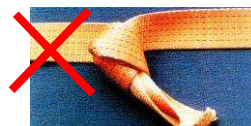
LABEL PRESENT



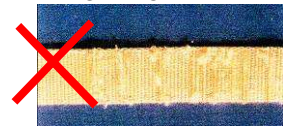
NO CUTS



NO KNOTS

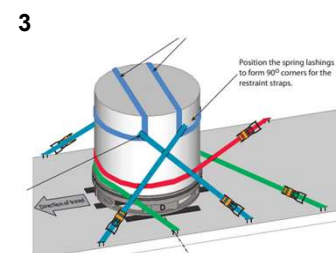
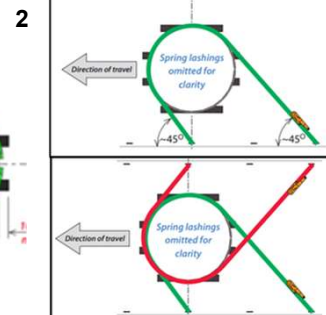
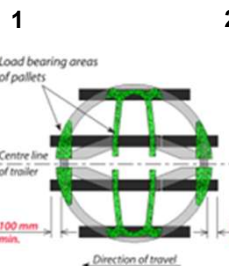


NOT WORN



**LOADS MUST BE SECURED IN THE LOADING BAY – PLEASE HAVE STRAPS READY BEFORE ENTERING THE BAY**

**STEEL COILS ON PALLETS**



**STEEL SHEETS IN BULKS**

