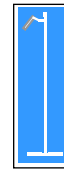


Loading:

Monday – Friday 24 hours
Saturday-Sunday Check

PPE Requirements:



Additional Information:



Reporting/Arrival:

Loading bay



On arrival stop at security



Drive to trailer park



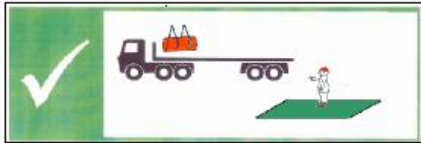
Report to traffic office with loading reference



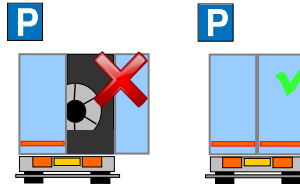
Park trailer legs on concrete strip

Loading/Securing:

Stand in green area during loading



DOORS MUST BE KEPT CLOSED WHEN DRIVING ON SITE



No loose or damaged well boards

Straps LC 2000 daN



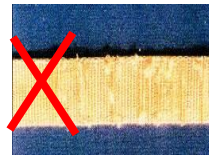
NO CUTS



NO KNOTS

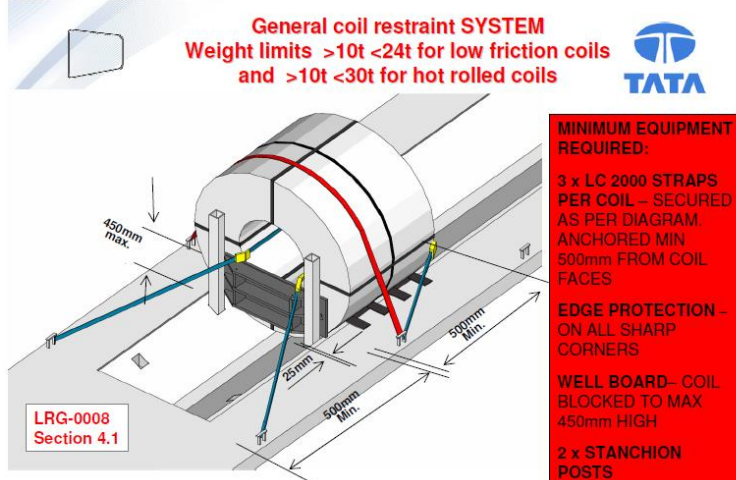


NOT WORN



Clean and tidy coil well

LOADS MUST BE SECURED IN THE LOADING BAY – PLEASE HAVE STRAPS READY BEFORE ENTERING THE BAY



Loading:

Monday – Friday 24 hours
Saturday-Sunday Check

PPE Requirements:



Additional Information:



Reporting/Arrival:

Loading bay



On arrival stop at security



Drive to trailer park



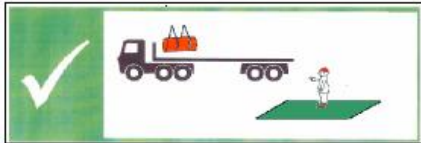
Report to traffic office with loading reference



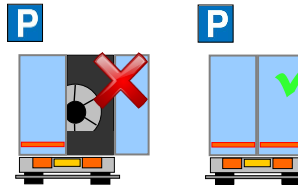
Park trailer legs on concrete strip

Loading/Securing:

Stand in green area during loading



DOORS MUST BE KEPT CLOSED WHEN DRIVING ON SITE

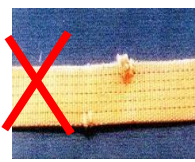


No loose or damaged well boards

Straps LC 2000 daN



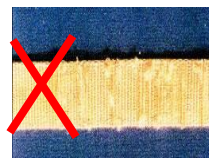
NO CUTS



NO KNOTS



NOT WORN



Clean and tidy coil well

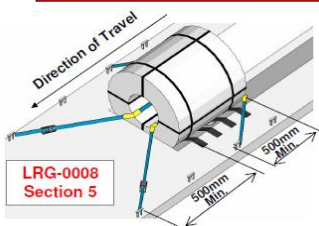
LOADS MUST BE SECURED IN THE LOADING BAY – PLEASE HAVE STRAPS READY BEFORE ENTERING THE BAY

Restraint system without stanchion posts



MINIMUM EQUIPMENT REQUIRED:

2 x LC 2000 STRAPS PER COIL – SECURED AS PER DIAGRAM
EDGE PROTECTION – ON ALL EXPOSED CORNERS



Weight Limits

- Maximum weight **10 tonnes**
- Coil must be positioned against the front of the well for forward restraint.
- Bore straps must be anchored a minimum of **500mm** forward of the front and rear faces of the coil.

Anti-slip matting shown for all coils originating in continental Europe

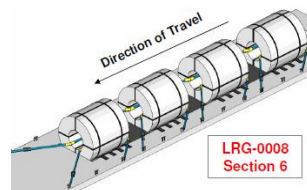
This restraint method is **NOT** to be used for **topple sensitive coils**

Restraining multiple coils Weight limits <10t



MINIMUM EQUIPMENT REQUIRED:

2 x LC 2000 STRAPS PER COIL – SECURED AS PER DIAGRAM
EDGE PROTECTION – ON ALL EXPOSED CORNERS



- First Coil must be positioned against the front of the well for forward restraint.
- No more than **ONE** well board to be used as blocking between coils.
- Individual coil weights **MUST** not exceed **10 tonnes**.
- Coils above 10 tonnes must be restrained against stanchion posts as shown in sections **4.1 guideline**.

Anti-slip matting shown for all coils originating in continental Europe

This restraint method is **NOT** to be used for **topple sensitive coils**.