

# COLLECTION PLAN ROUNDOAK RAIL

## Loading:

Mon\_ Thu 1330hrs - 2100hrs  
 Fri 1330hrs - 1900hrs  
 0600hrs-1330hrs by arrangement

## PPE Requirements:



## Additional Information:



## Reporting/Arrival:

### Loading bay



On Arrival Park on road opposite security

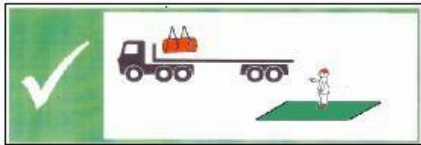
Report to security with load reference

Enter site and park vehicle or enter loading bay as instructed

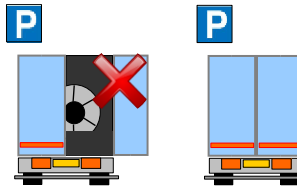
When instructed enter loading bay

## Loading/Securing:

Stand in green area during loading



DOORS MUST BE KEPT CLOSED WHEN DRIVING ON SITE

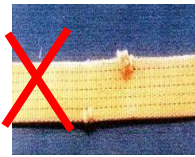


No loose or damaged well boards

Straps LC 2000 daN



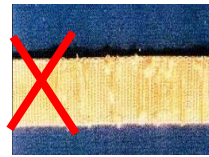
NO CUTS



NO KNOTS

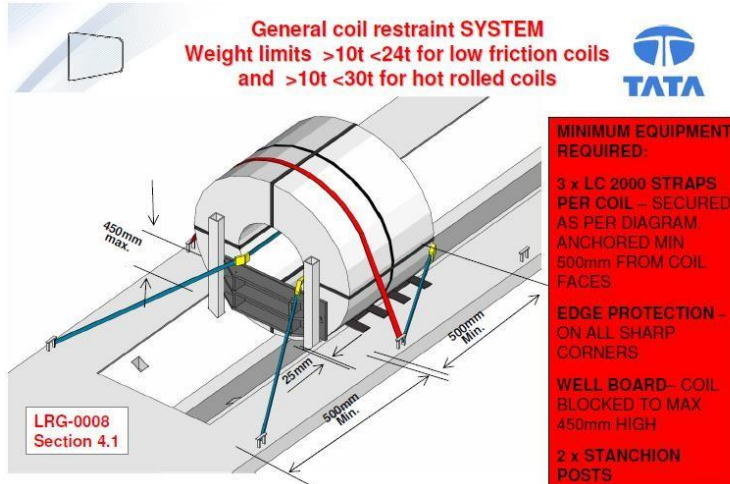


NOT WORN



Clean and tidy coil well

**LOADS MUST BE SECURED IN THE LOADING BAY - PLEASE HAVE STRAPS READY BEFORE ENTERING THE BAY**



## Loading:

Mon– Thu 1330hrs - 2100hrs  
 Fri 1330hrs – 1900hrs  
 0600hrs-1330hrs by arrangement

## PPE Requirements:



## Additional Information:



## Reporting/Arrival:

## Loading bay



On arrival park on road opposite security



Report to security with load reference



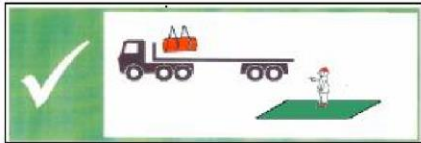
Enter site and park vehicle or enter loading bay as instructed



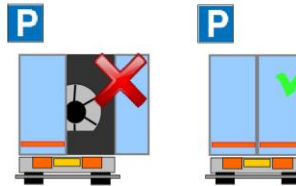
When instructed enter loading bay

## Loading/Securing:

Stand in green area during loading



DOORS MUST BE KEPT CLOSED WHEN DRIVING ON SITE

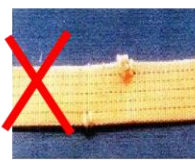


No loose or damaged well boards

Straps LC 2000 daN



NO CUTS



NO KNOTS



NOT WORN



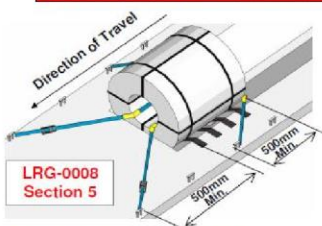
Clean and tidy coil well

**LOADS MUST BE SECURED IN THE LOADING BAY – PLEASE HAVE STRAPS READY BEFORE ENTERING THE BAY**

## Restraint system without stanchion posts



**MINIMUM EQUIPMENT REQUIRED:**  
 2 x LC 2000 STRAPS PER COIL – SECURED AS PER DIAGRAM  
 EDGE PROTECTION – ON ALL EXPOSED CORNERS



### Weight Limits

- Maximum weight **10 tonnes**
- Coil must be positioned against the front of the well for forward restraint.
- Bore straps must be anchored a minimum of **500mm** forward of the front and rear faces of the coil.

Anti-slip matting shown for all coils originating in continental Europe

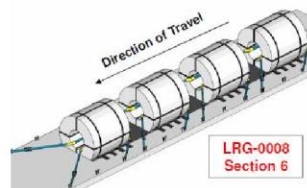
This restraint method is **NOT** to be used for **topple sensitive coils**

## Restraining multiple coils

Weight limits <10t



**MINIMUM EQUIPMENT REQUIRED:**  
 2 x LC 2000 STRAPS PER COIL – SECURED AS PER DIAGRAM  
 EDGE PROTECTION – ON ALL EXPOSED CORNERS



- First Coil must be positioned against the front of the well for forward restraint.
- No more than **ONE** well board to be used as blocking between coils.
- Individual coil weights **MUST** not exceed **10 tonnes**.
- Coils above 10 tonnes must be restrained against stanchion posts as shown in sections **4.1 guideline**.

Anti-slip matting shown for all coils originating in continental Europe

This restraint method is **NOT** to be used for **topple sensitive coils**.