

Loading:

Monday – Friday 0600-2200

PPE Requirements:



Additional Information:



Reporting/Arrival:



ON ARRIVAL STOP AT **M&G** VIA
SECURITY GATE **A**

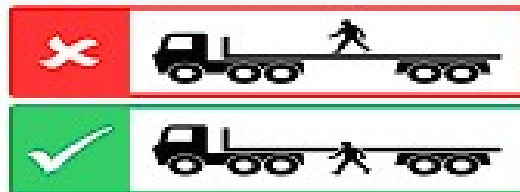
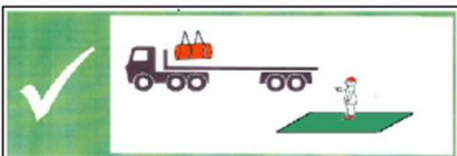


AFTER **INDUCTION GATE D**

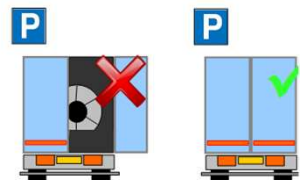


Loading/ Securing

Stay in Green Area during Loading



DOORS MUST BE KEPT CLOSED WHEN DRIVING ON SITE



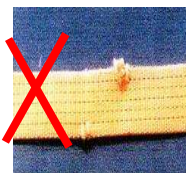
Straps **MIN LC 2000 daN**



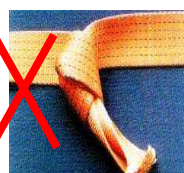
MIN X 14
MAX X 16



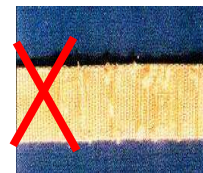
NO CUTS



NO KNOTS



NOT WORN



LOADS MUST BE SECURED IN THE LOADING BAY OR THE TRAILER PARK – PLEASE HAVE STRAPS READY BEFORE ENTERING THE BAY

SECURING INFORMATION ON REVERSE

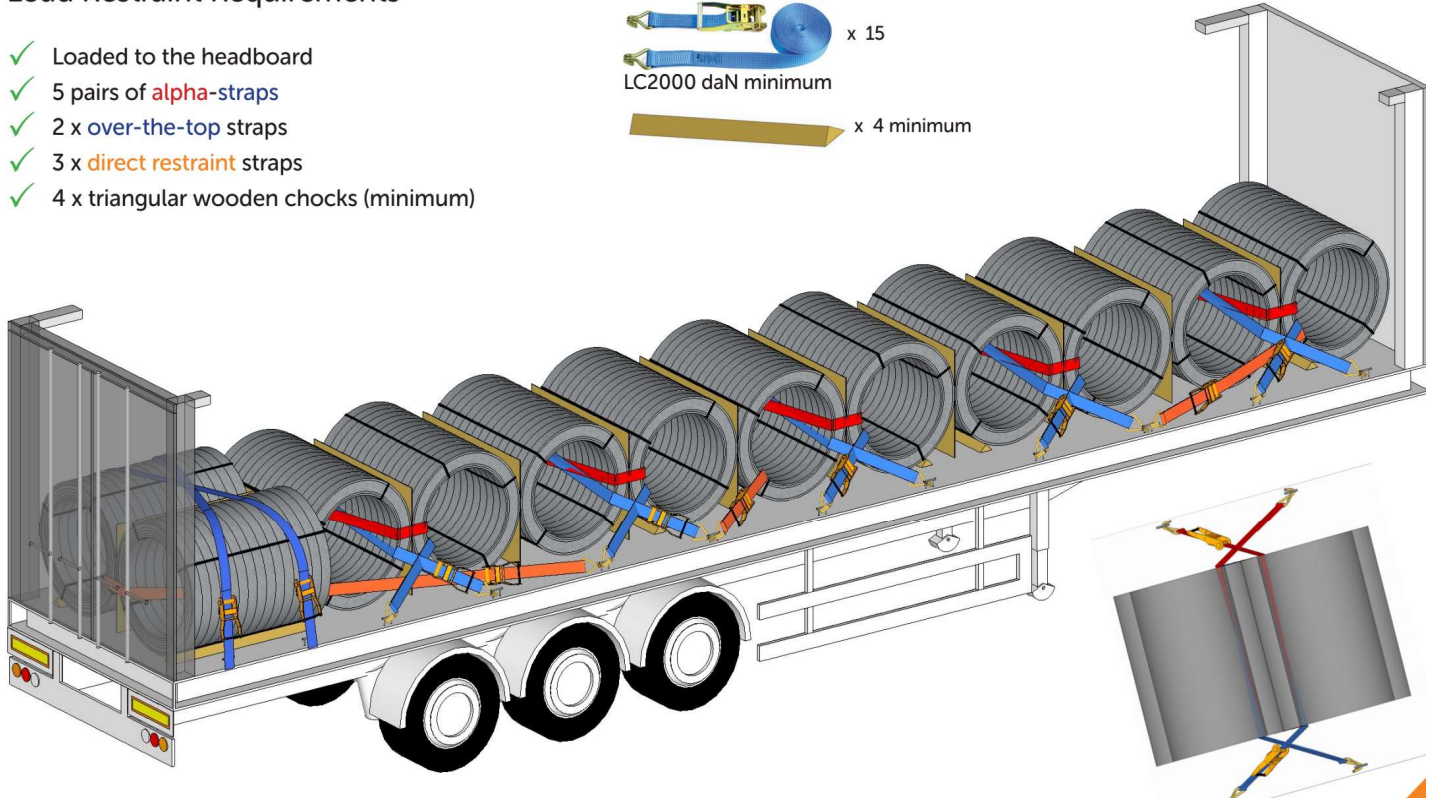
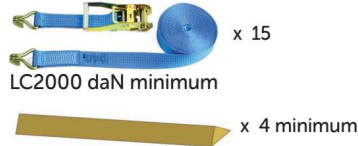
LRG 0019 12 Coil Load XL Headboard



ALL EXPORT LOADS MUST BE LOADED AS FOR A 2 AXLE TRACTOR UNIT TO AVOID AXLE WEIGHT ISSUES ON THE CONTINENT

Load Restraint Requirements

- ✓ Loaded to the headboard
- ✓ 5 pairs of **alpha**-straps
- ✓ 2 x **over-the-top** straps
- ✓ 3 x **direct restraint** straps
- ✓ 4 x triangular wooden chocks (minimum)



Export Load - Ratchet positions and direction of pull

