

Loading:

Monday – Friday 0600-2200

PPE Requirements:



Additional Information:



Reporting/Arrival:



ON ARRIVAL STOP AT **M&G** VIA SECURITY GATE **A**

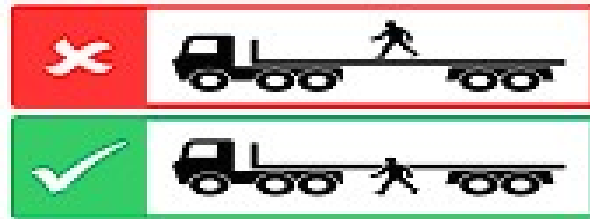


AFTER INDUCTION GATE **D**

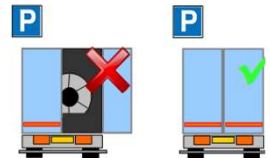


Loading/ Securing

Stay in Green Area during Loading



DOORS MUST BE KEPT CLOSED WHEN DRIVING ON SITE



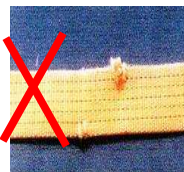
Straps **MIN LC 2000 daN**



MIN X 16



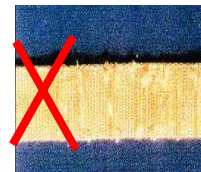
NO CUTS



NO KNOTS



NOT WORN



LOADS MUST BE SECURED IN THE LOADING BAY OR TRAILER PARK – PLEASE HAVE STRAPS READY!

SECURING INFORMATION ON REVERSE

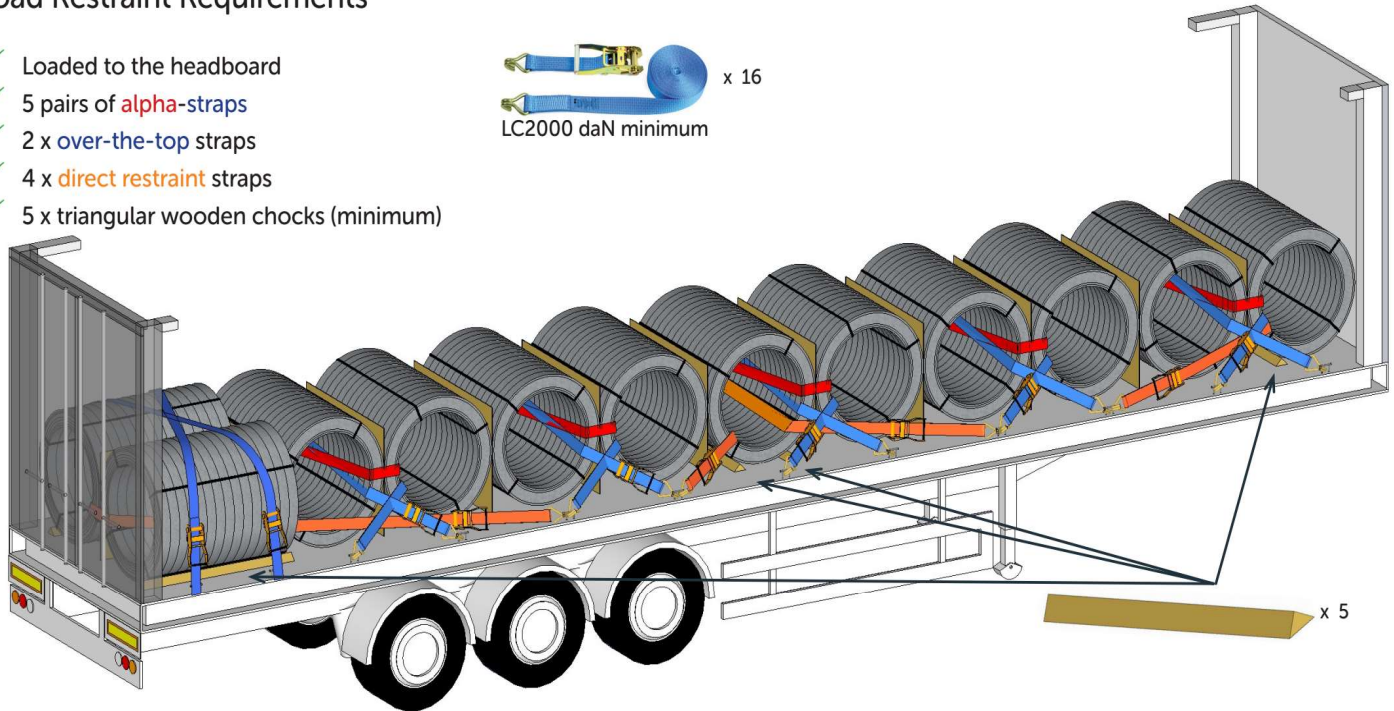
LRG 0019 12 Coil Intermodal Load XL Headboard

ALL EXPORT LOADS MUST BE LOADED AS FOR A 2 AXLE TRACTOR UNIT TO AVOID AXLE WEIGHT ISSUES ON THE CONTINENT

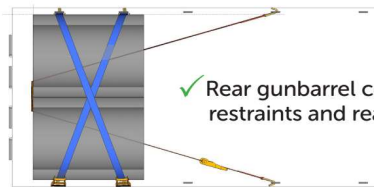


Load Restraint Requirements

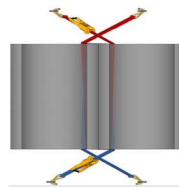
- ✓ Loaded to the headboard
- ✓ 5 pairs of **alpha**-straps
- ✓ 2 x **over-the-top** straps
- ✓ 4 x **direct restraint** straps
- ✓ 5 x triangular wooden chocks (minimum)



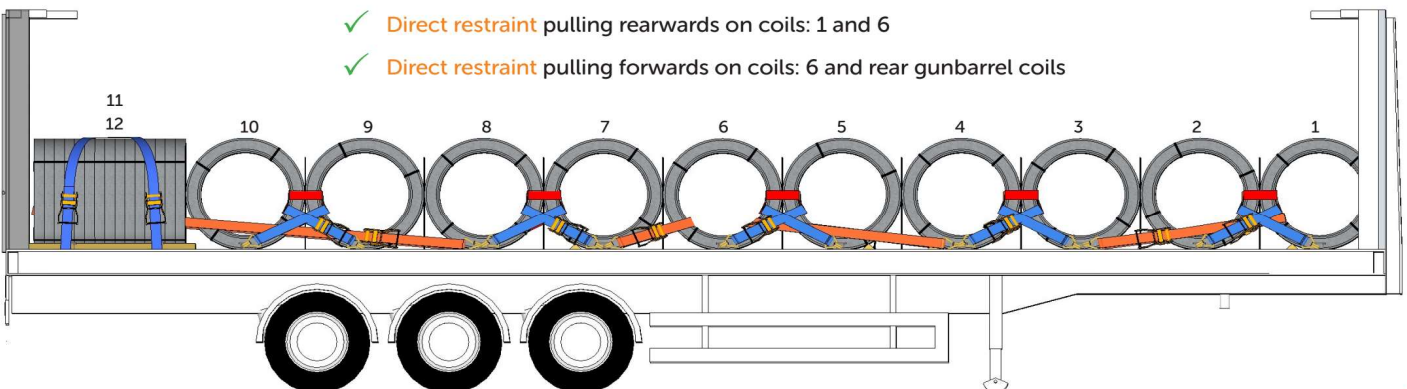
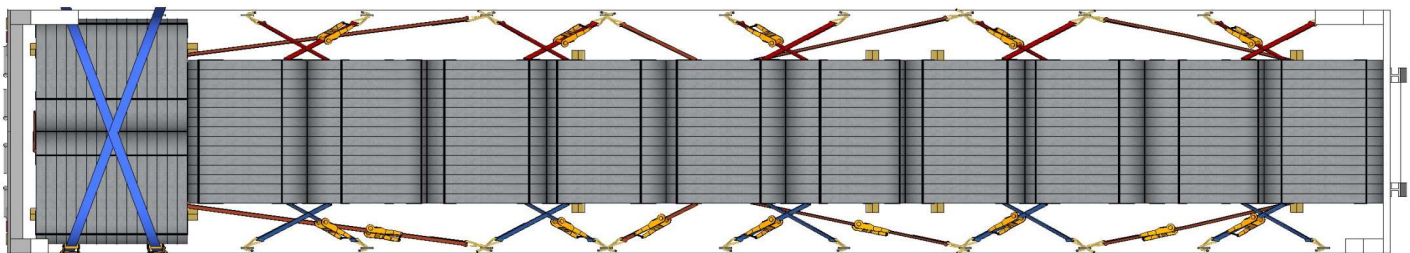
Warning: Unchoked coils may roll whilst loading and unloading. Use temporary chocks as necessary.



✓ Rear gunbarrel coils with **over-the-top** restraints and rear **direct restraint**



✓ Cross loaded coils fitted with 2 **alpha**-straps for each pair of cross-loaded coils



- ✓ **Direct restraint** pulling rearwards on coils: 1 and 6
- ✓ **Direct restraint** pulling forwards on coils: 6 and rear gunbarrel coils

For further guidance see *LRG-0019 WRIC Export loads*

