



British Steel, Scunthorpe REDBOURN FN Billet Collection Plan Curtainsider

Loading:

Monday – Friday 0800-1500

PPE Requirements:



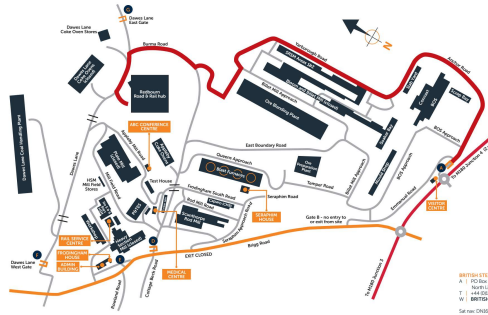
Additional Information:



Reporting/Arrival:



ON ARRIVAL STOP AT VISITOR CENTRE GATE **A**



REDBOURN HUB DRIVER RECEPTION



Collect from P&O Hut



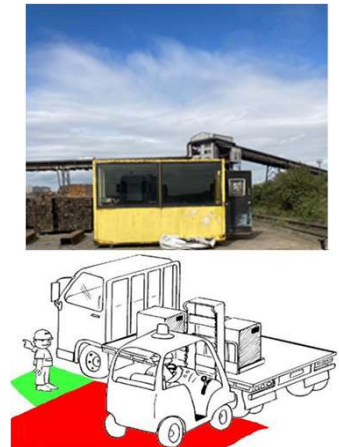
Open both curtains and left side roof supports and tie-back with strap.
NO CLIMBING



Collect 5 x Large Timbers and 2 X Short Timbers.
8 X Anti-slip Mats



Set Timbers and ASM as per LRG and then go to **Safe Haven**

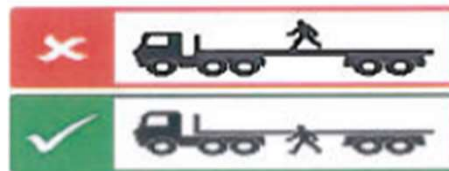
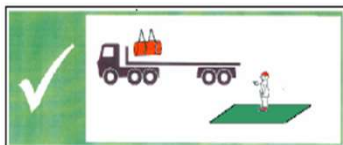


Stay in **Safe Haven** during Loading

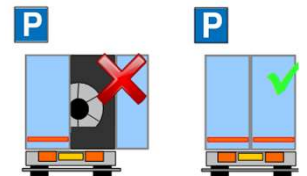
DOORS MUST BE KEPT CLOSED WHEN DRIVING ON SITE

Loading/Securing:

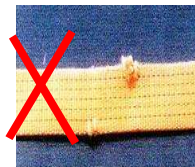
Stand in green area during loading



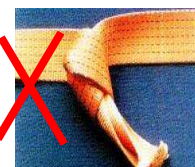
Straps **MIN LC 2000 daN**



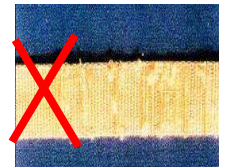
NO CUTS



NO KNOTS



NOT WORN



LOADS MUST BE SECURED IN THE STRAPPING AREA – PLEASE HAVE ALL EQUIPMENT READY

SECURING INFORMATION ON REVERSE

TAD 0117 FN Billet **3 AXLE TRACTOR UNIT**

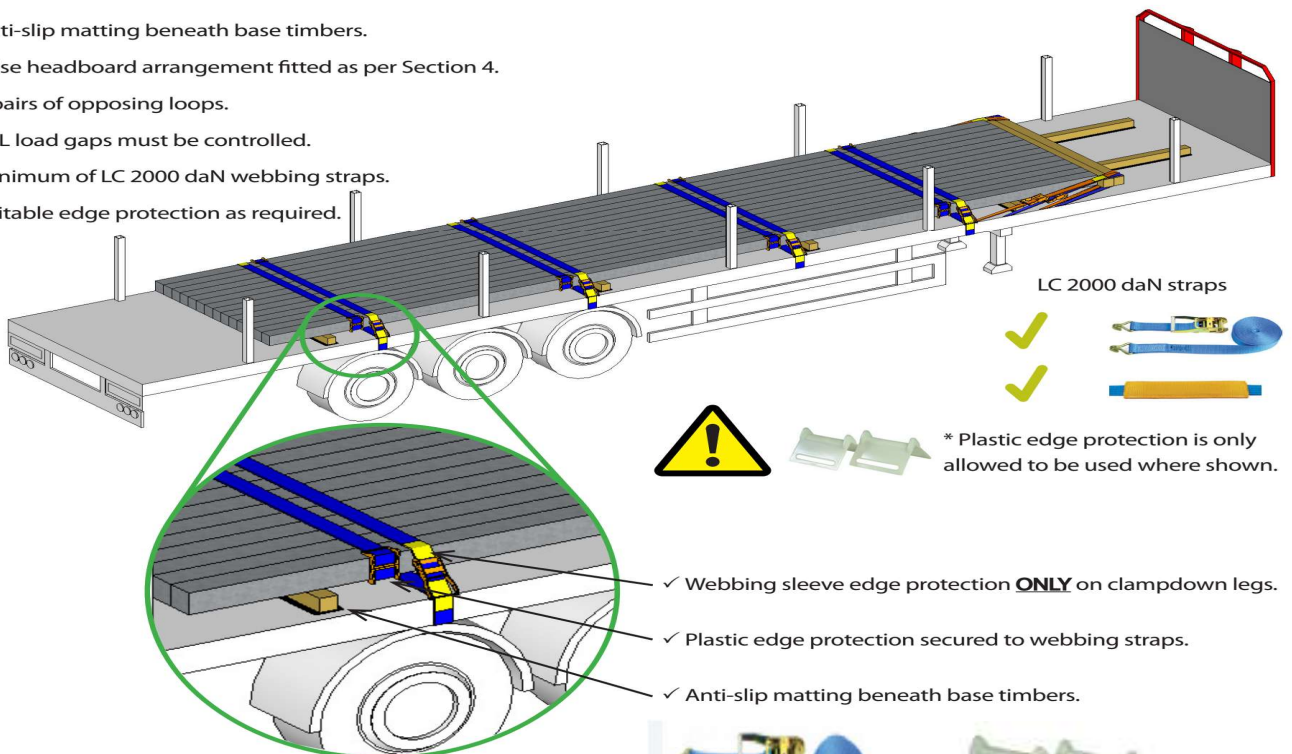
ALL Collections MUST be with 3 Axle Tractor Units to achieve full loads OF 26.5Tonnes.

- All loads must be blocked in the forwards direction.
- All restraints must be a minimum of LC 2000 daN webbing straps and must be compliant with EN 12195-2.
- Webbing sleeve edge protection must be fitted to webbing straps in contact with the product and the chassis frame (unless otherwise stated).
- Anti-slip matting must be placed between all base timbers and the trailer deck.
- Loads must be placed in accordance with TIS-0012 Axle loads and weight distribution.

3. Load configuration and restraint

3.1 Timber frame false headboard

- ✓ Anti-slip matting beneath base timbers.
- ✓ False headboard arrangement fitted as per Section 4.
- ✓ 4 pairs of opposing loops.
- ✓ ALL load gaps must be controlled.
- ✓ Minimum of LC 2000 daN webbing straps.
- ✓ Suitable edge protection as required.



LC 2000 daN straps



* Plastic edge protection is only allowed to be used where shown.



- ✓ Webbing sleeve edge protection **ONLY** on clampdown legs.
- ✓ Plastic edge protection secured to webbing straps.
- ✓ Anti-slip matting beneath base timbers.



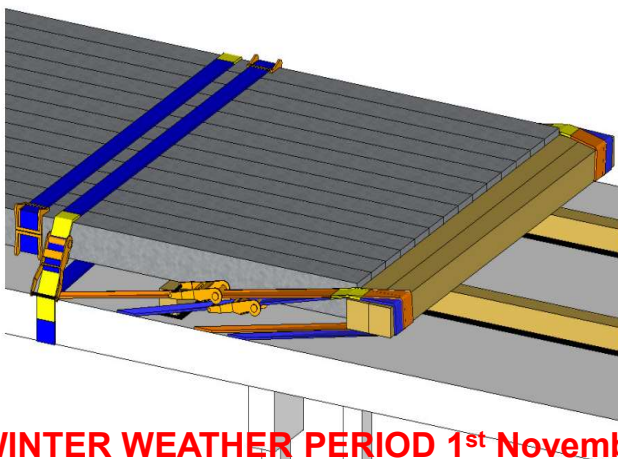
Min X 16



MIN X 12

**MIN X 8 to be placed
Closest to the Ratchet**

4. False headboard arrangement



- ✓ Anti-slip matting beneath supporting timbers.
- ✓ 2off timbers with a minimum cross section of 125mm x 125mm must be used.
- ✓ 4 webbing straps pulling rearwards (2 on each side the of load).
- ✓ Minimum of LC 2000 daN webbing straps.
- ✓ Webbing sleeve edge protection as required.
- ✓ Minimize gaps between product and blocking arrangement.

WINTER WEATHER PERIOD 1st November to 31st March Apply Anti-slip Matting to both sides of ALL the Timbers