

Loading:

Monday 0600hrs –
Saturday 0600hrs

PPE & Equipment Requirements:



Additional Information:



Reporting/Arrival:



On arrival stop at
Security



Report to Weighbridge to
receive Colour coded pick
list



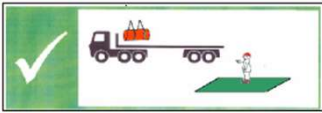
Shotton Handler Site Storage Locations

WAREHOUSE EAST	☆
WAREHOUSE MIDDLE	□
WAREHOUSE WEST	△
COIL 20-20 BAY WEST	△
COIL PAINT STORE	□
RAILHEAD	☆
COIL 21-23 BAY	△
COIL 31 BAY EAST	☆
ENGINEERING 30 BAY WEST	△
COIL PAINT STORE	□
4 BAY WAREHOUSE	○
PANELS EAST	☆
PANELS WEST	△
STORES	○
GROUND	☆
METAL CENTRE	∞

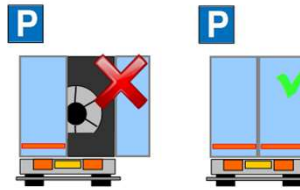
Follow coloured sign to
relevant loading bay

Loading/Securing:

Stand in green
area during
loading



DOORS MUST BE KEPT CLOSED WHEN
DRIVING ON SITE

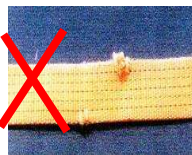


No loose or damaged well
boards

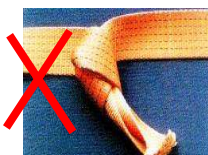
Straps LC 2000 daN



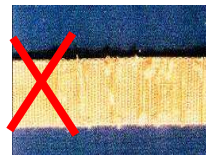
NO CUTS



NO KNOTS



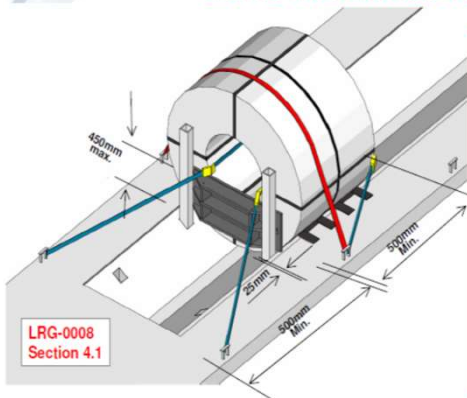
NOT WORN



Clean and tidy coil well

LOADS MUST BE SECURED IN THE LOADING BAY – PLEASE HAVE STRAPS READY BEFORE ENTERING THE BAY

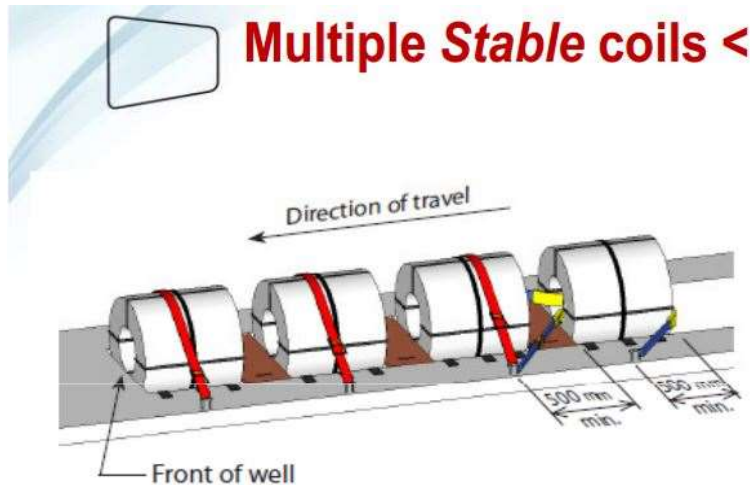
General coil restraint SYSTEM
Weight limits >10t <24t for low friction coils
and >10t <30t for hot rolled coils



LRG-008
Section 4.1

**MINIMUM EQUIPMENT
REQUIRED:**
3 x LC 2000 STRAPS
PER COIL - SECURED
AS PER DIAGRAM
ANCHORED MIN
500mm FROM COIL
FACES
EDGE PROTECTION -
ON ALL SHARP
CORNERS
WELL BOARD - COIL
BLOCKED TO MAX
450mm HIGH
2 x STANCHION
POSTS

Multiple Stable coils <



Tata Steel, Colors Shotton Works, Deeside Collection Plan

Loading:

Monday 0600hrs –
Saturday 0600hrs

PPE & Equipment Requirements:



Additional Information:



Reporting/Arrival:



On arrival stop at
Security



Report to Weighbridge to
receive Colour coded pick
list



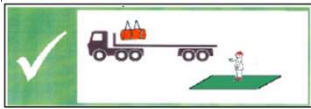
Shotton Handler Site Storage Locations

1 WAREHOUSE EAST	☆
2 WAREHOUSE MIDDLE	□
3 WAREHOUSE WEST	△
COLL PAINT STORE	△
RAILHEAD	☆
COLL 20-20 BAY WEST	△
COLL 31 BAY EAST	☆
ENGINEERING 30 BAY WEST	△
COLL PAINT STORE	□
4 BAY WAREHOUSE	○
PANELS EAST	☆
PANELS WEST	△
STORES	○
CRACK	☆
METAL CENTRE	∞

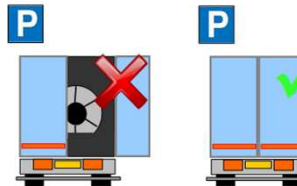
Follow coloured sign to
relevant loading bay

Loading/Securing:

Stand in green
area during
loading



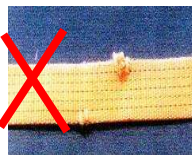
DOORS MUST BE KEPT CLOSED WHEN
DRIVING ON SITE



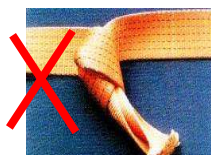
Straps LC 2000 daN



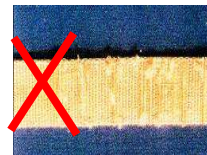
NO CUTS



NO KNOTS



NOT WORN



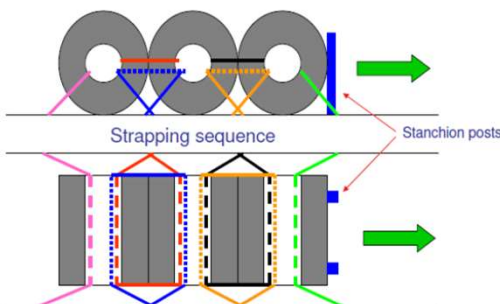
Clean and tidy trailer bed

LOADS MUST BE SECURED IN THE LOADING BAY – PLEASE HAVE STRAPS READY BEFORE ENTERING THE BAY

Coils on Cradles - secured as a block



MINIMUM EQUIPMENT REQUIRED:
2 x LC 2000 STRAPS PER COIL – SECURED AS PER DIAGRAM
EDGE PROTECTION – ON ALL EXPOSED CORNERS



Coils on Cradles > 6t – secured individually



MINIMUM EQUIPMENT REQUIRED:
4 x LC 2000 STRAPS PER COIL – SECURED AS PER DIAGRAM
EDGE PROTECTION – ON ALL EXPOSED CORNERS

