



A DP WORLD Company

# British Steel, Skinningrove Gantries Collection Plan Bulb Flats

**Loading:**  
Monday – Friday 0700-1900

POST CODE: TS13 4ET

### PPE Requirements:



### Additional Information:



### Reporting/Arrival:



**ON ARRIVAL STOP AT SECURITY GATE IN PPE**



**DRIVER RECEPTION / INDUCTION**



**WEIGHBRIDGE  
Weigh ON**

### Loading/Securing:

Stand in **SAFE HAVEN** during loading



**OPEN BOTH CURTAINS AND STRAP FROM THE GROUND**

Straps **MIN LC 2000 daN**



**MIN X 12**



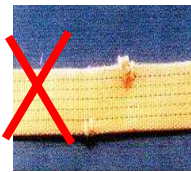
**OR**



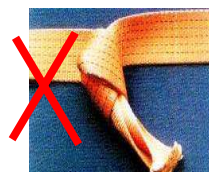
**MIN X 24**



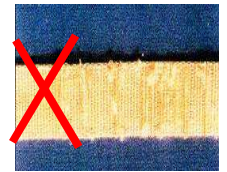
**NO CUTS**



**NO KNOTS**



**NOT WORN**



**LOADS MUST BE SECURED IN THE LOADING BAY – PLEASE HAVE STRAPS READY BEFORE ENTERING THE BAY**

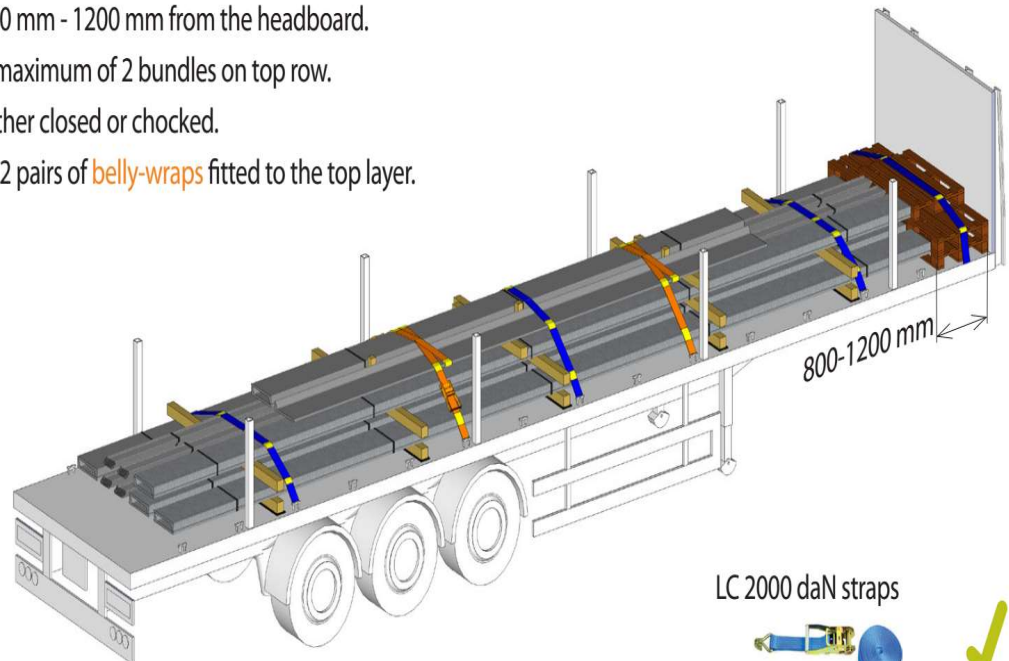
**SECURING INFORMATION ON REVERSE SIDE**

# LRG 0042 Bulb Flats

**ALL EXPORT LOADS MUST BE LOADED AS FOR A 2 AXLE TRACTOR UNIT TO AVOID AXLE WEIGHT ISSUES ON THE CONTINENT**

## 4.2 Export loads with shorts

- ✓ Square base timbers on anti-slip matting.
- ✓ Bottom layer(s) blocked 800 mm - 1200 mm from the headboard.
- ✓ Pyramid load build with a maximum of 2 bundles on top row.
- ✓ Gaps in top tier must be either closed or chocked.
- ✓ 3 over-the-top restraints + 2 pairs of belly-wraps fitted to the top layer.



LC 2000 daN straps



OR

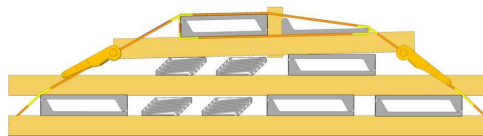
**MIN X 24**



Note: 25.6 t blocked to the headboard in a pyramid load (with short products on the top) for the export market

## 5.4 Belly-wrap application

- When applying a belly-wrap, ensure that the restraint is in a forward 'crossed-over' position.
- This applies for both webbing straps and chains.
- Where required, separate edge protection must be used for each corner contact point.



- ✓ 2 tensioners required for each belly-wrap.
- ✓ Restraints applied in a forward 'cross-over' position.
- ✓ Separate edge protection for each corner contact point.

