



A DP WORLD Company

# British Steel, Skinningrove Ponderosa FN Billets Curtainsider

**Loading:**  
Monday – Friday 0700-1900

POST CODE: TS13 4ET

### PPE Requirements:



### Additional Information:



### Reporting/Arrival:



**ON ARRIVAL STOP AT SECURITY GATE IN PPE**



**DRIVER RECEPTION / INDUCTION**



**Ask where to collect?**



**WEIGHBRIDGE Weigh ON**



**Open both curtains and left side roof supports and tie-back with strap. NO CLIMBING**



**Collect 5 x Large Timbers and 2 X Short Timbers. 8 X Anti-slip Mats**



**Set Timbers and ASM as per LRG and then go to Safe Haven**



**Stand in SAFE HAVEN during loading. Only leave when loader gives permission**

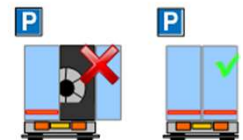
DOORS MUST BE KEPT CLOSED WHEN DRIVING ON SITE

### Loading/Securing:

Stand in green area during loading



Straps **MIN LC 2000 daN**



**MIN X 12**

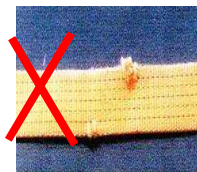


**Min X 16**

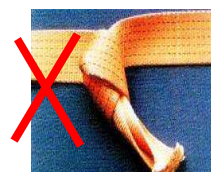
**MIN X 8**



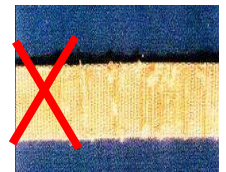
**NO CUTS**



**NO KNOTS**



**NOT WORN**



**LOADS MUST BE SECURED IN THE STRAPPING AREA – PLEASE HAVE ALL EQUIPMENT READY  
SECURING INFORMATION ON REVERSE SIDE**

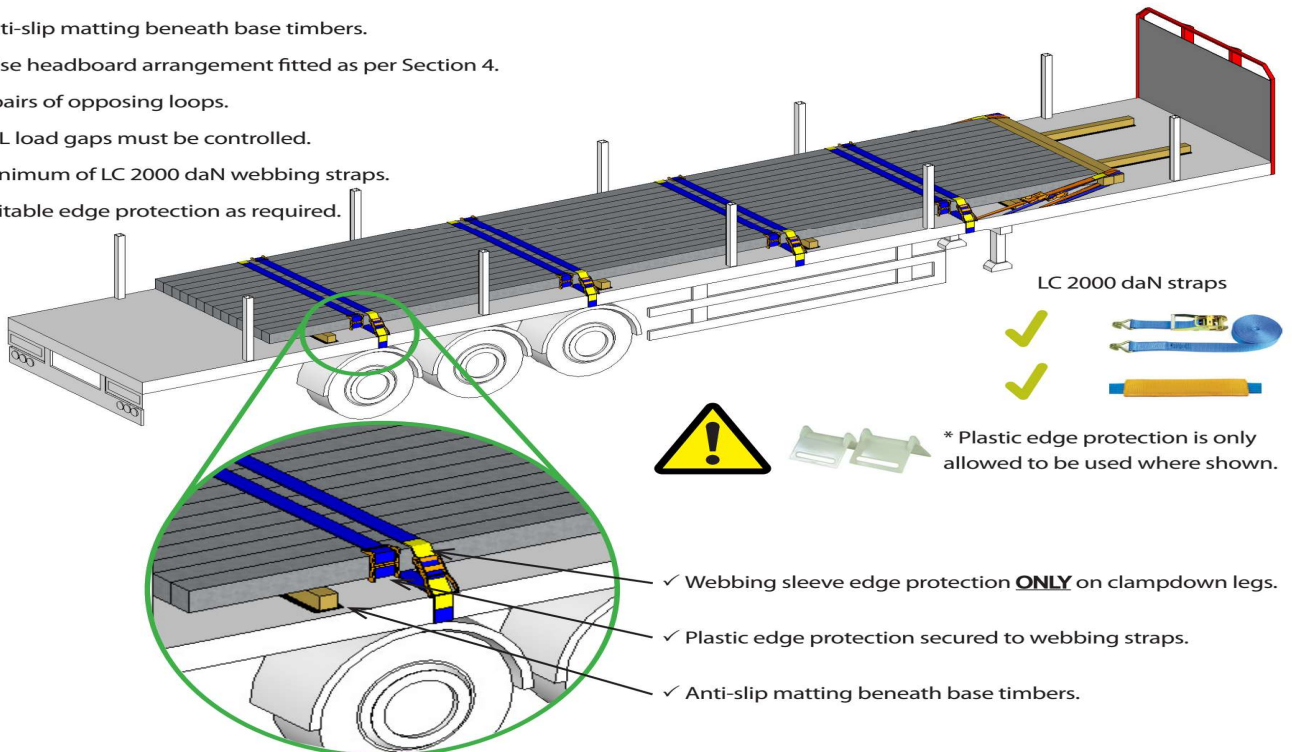
# TAD 0117 FN Billet

- All loads must be blocked in the forwards direction.
- All restraints must be a minimum of LC 2000 daN webbing straps and must be compliant with EN 12195-2.
- Webbing sleeve edge protection must be fitted to webbing straps in contact with the product and the chassis frame (unless otherwise stated).
- Anti-slip matting must be placed between all base timbers and the trailer deck.
- Loads must be placed in accordance with TIS-0012 Axle loads and weight distribution.

## 3. Load configuration and restraint

### 3.1 Timber frame false headboard

- ✓ Anti-slip matting beneath base timbers.
- ✓ False headboard arrangement fitted as per Section 4.
- ✓ 4 pairs of opposing loops.
- ✓ ALL load gaps must be controlled.
- ✓ Minimum of LC 2000 daN webbing straps.
- ✓ Suitable edge protection as required.



LC 2000 daN straps



\* Plastic edge protection is only allowed to be used where shown.

- ✓ Webbing sleeve edge protection **ONLY** on clampdown legs.
- ✓ Plastic edge protection secured to webbing straps.
- ✓ Anti-slip matting beneath base timbers.



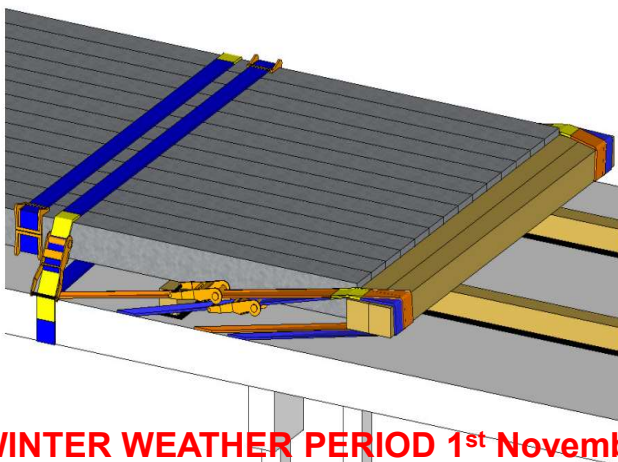
Min X 16

MIN X 12



MIN X 8 to be placed  
Closest to the Ratchet

## 4. False headboard arrangement



- ✓ Anti-slip matting beneath supporting timbers.
- ✓ 2off timbers with a minimum cross section of 125mm x 125mm must be used.
- ✓ 4 webbing straps pulling rearwards (2 on each side the of load).
- ✓ Minimum of LC 2000 daN webbing straps.
- ✓ Webbing sleeve edge protection as required.
- ✓ Minimize gaps between product and blocking arrangement.

**WINTER WEATHER PERIOD 1<sup>st</sup> November to 31<sup>st</sup> March Apply Anti-slip Matting to both sides of ALL the Timbers**