



A DP WORLD Company

# British Steel, Skinningrove Ponderosa FN Billets Flatbeds

**Loading:**  
Monday – Friday 0700-1900

POST CODE: TS13 4ET

### PPE Requirements:



### Additional Information:



### Reporting/Arrival:



**ON ARRIVAL STOP AT SECURITY GATE IN PPE**



**DRIVER RECEPTION / INDUCTION**



**Ask where to collect?**



**WEIGHBRIDGE Weigh ON**

Use a platform to place minimum 3 stanchions and 3 timbers strapped down to create false headboard  
**NO CLIMBING**



**Collect 6 x Large Timbers and 8 X Anti-slip Mats**

**Set Timbers and ASM as per LRG and then go to Safe Haven**



Stand in **SAFE HAVEN** during loading. Only leave when loader gives permission

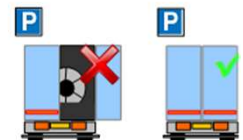
DOORS MUST BE KEPT CLOSED WHEN DRIVING ON SITE

### Loading/Securing:

Stand in green area during loading



Straps **MIN LC 2000 daN**



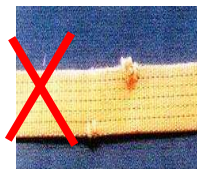
**MIN X 12**

**Min X 16**

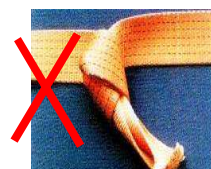
**MIN X 8**



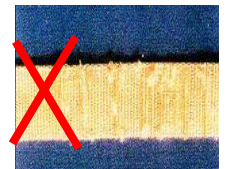
**NO CUTS**



**NO KNOTS**



**NOT WORN**



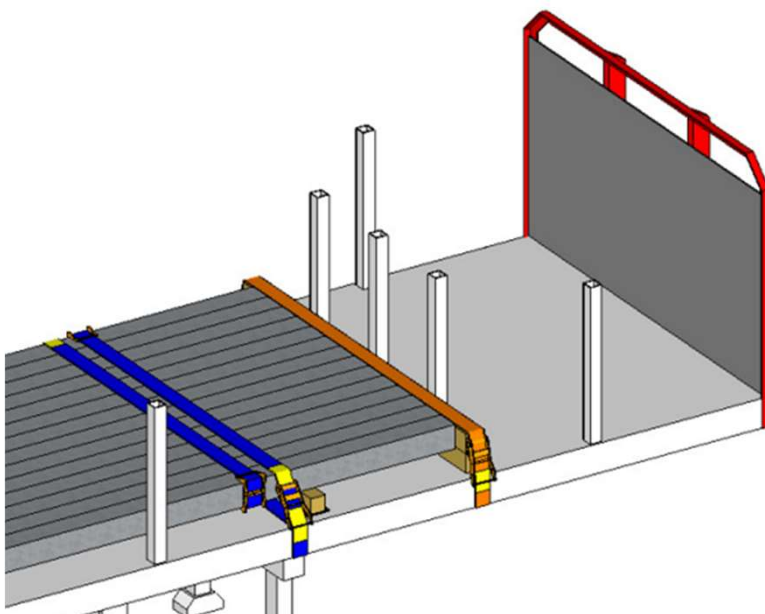
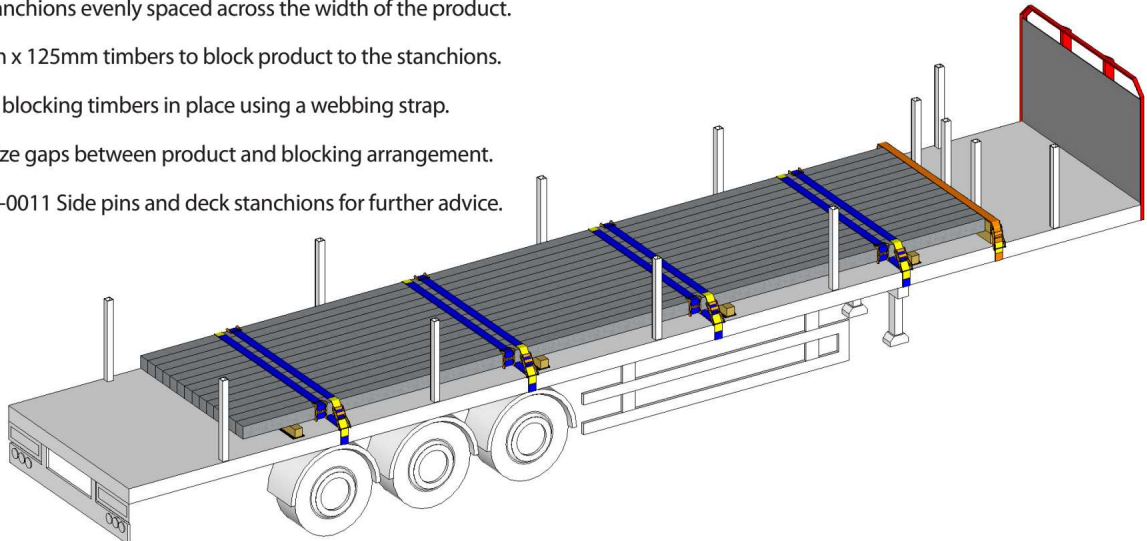
**LOADS MUST BE SECURED IN THE STRAPPING AREA – PLEASE HAVE ALL EQUIPMENT READY  
SECURING INFORMATION ON REVERSE SIDE**

# TAD 0117 FN Billet **3 AXLE TRACTOR UNIT**

**ALL Collections MUST be with 3 Axle Tractor Units to achieve full loads OF 26.5Tonnes.**

## 2. Essential requirements

- All loads must be blocked in the forwards direction.
- All restraints must be a minimum of LC 2000 daN webbing straps and must be compliant with EN 12195-2.
- Webbing sleeve edge protection must be fitted to webbing straps in contact with the product and the chassis frame (unless otherwise stated).
- Anti-slip matting must be placed between all base timbers and the trailer deck.
- Loads must be placed in accordance with TIS-0012 Axle loads and weight distribution.
  - ✓ Stanchions must be a minimum of 80mm x 80mm with a wall thickness of 5mm - Steel Grade S355.
  - ✓ 3off stanchions evenly spaced across the width of the product.
  - ✓ 125mm x 125mm timbers to block product to the stanchions.
  - ✓ Secure blocking timbers in place using a webbing strap.
  - ✓ Minimize gaps between product and blocking arrangement.
  - ✓ See TIS-0011 Side pins and deck stanchions for further advice.



**MIN X 12**



**Min X 16**



**MIN X 8 to be placed  
Closest to the Ratchet**