



A DP WORLD Company

British Steel, Skinningrove Gantries Collection Plan Bundled Sections

Loading:
Monday – Friday 0700-1900

POST CODE: TS13 4ET

PPE Requirements:



Additional Information:



Reporting/Arrival:



ON ARRIVAL STOP AT SECURITY GATE IN PPE



DRIVER RECEPTION / INDUCTION



**WEIGHBRIDGE
Weigh ON**

Loading/Securing:

Stand in **SAFE HAVEN** during loading



OPEN BOTH CURTAINS AND STRAP FROM THE GROUND

Straps **MIN LC 2000 daN**



MIN X 18



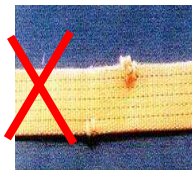
OR



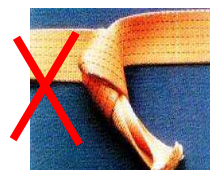
MIN X 72



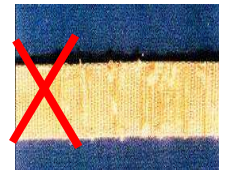
NO CUTS



NO KNOTS



NOT WORN



LOADS MUST BE SECURED IN THE STRAPPING AREA – PLEASE HAVE ALL EQUIPMENT READY

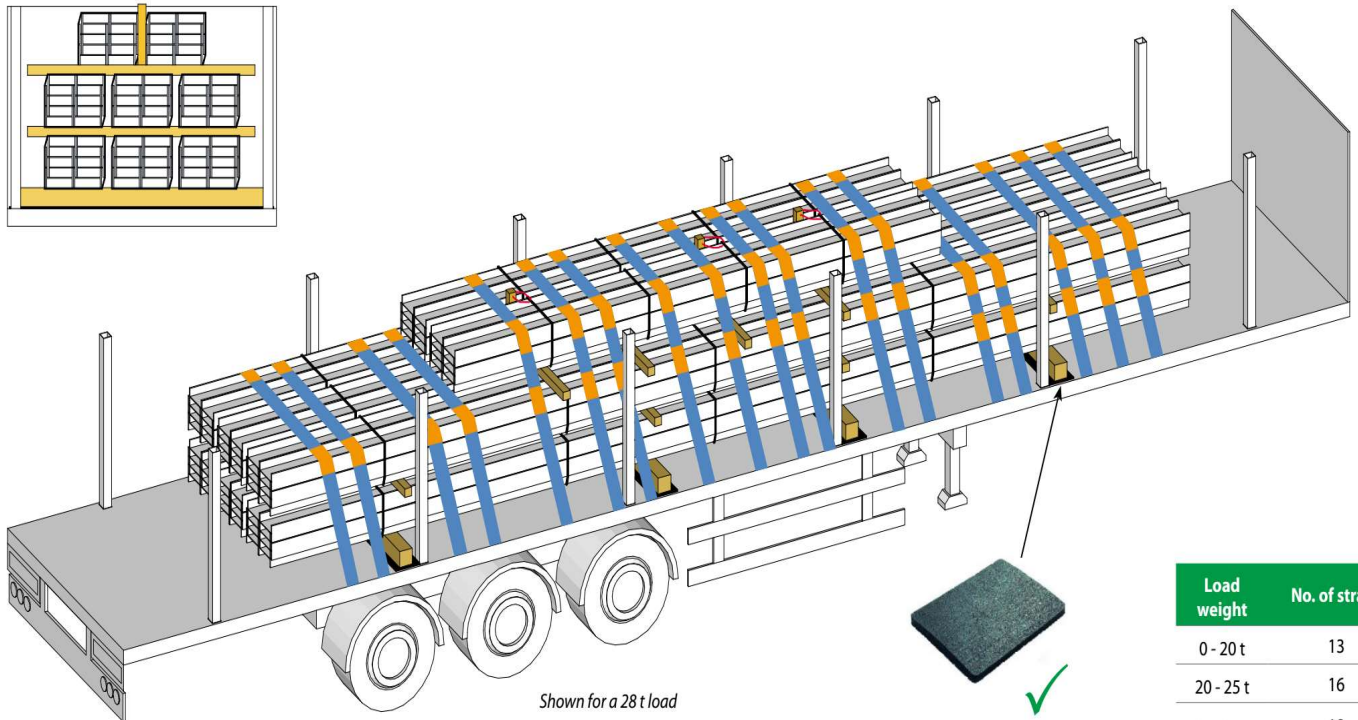
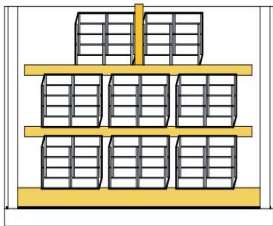
SECURING INFORMATION ON REVERSE SIDE

LRG 0017 Bundled Sections

ALL EXPORT LOADS MUST BE LOADED AS FOR A **2 AXLE** TRACTOR UNIT TO AVOID AXLE WEIGHT ISSUES ON THE CONTINENT

Loaded away from the headboard

Pyramid load build



Shown for a 28 t load

Load weight	No. of straps
0 - 20 t	13
20 - 25 t	16
25 - 28 t	18



Min X 54



Min X 10 to be placed
Closest to the Ratchet