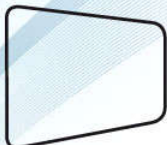


PPG Loading and Securing Procedure V3



X 16
min



1. Trailer in loading bay, pallets are placed in situ.



4. Straps pulled back to give sideways protection



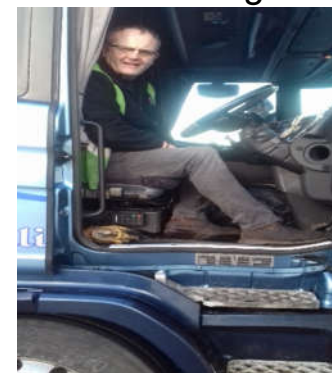
2. PPG loaders place strap through pallet, ready for Driver to tighten



5. Over the top straps on every stack



3. Driver waits in cab whilst fork truck is loading



6. Cross straps at the back



P&O
FERRYMASTERS

**PLACE STRAPS IN BETWEEN PAINT POTS. DO NOT
OVER TIGHTEN STRAPS!!
THIS LEADS TO PAINT LEAKAGES AND PACKAGE FAILURE.**

 the sense of logistics