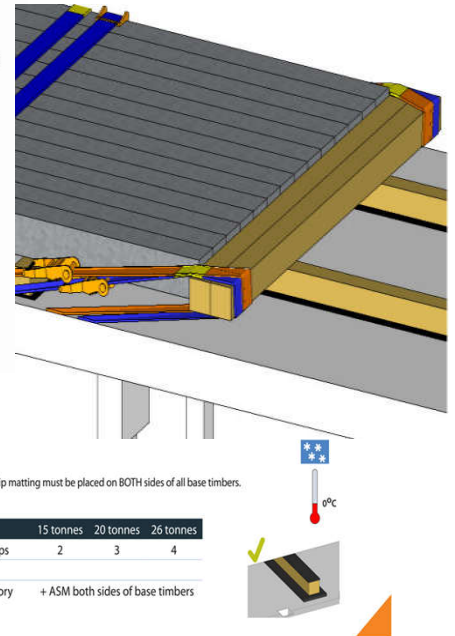
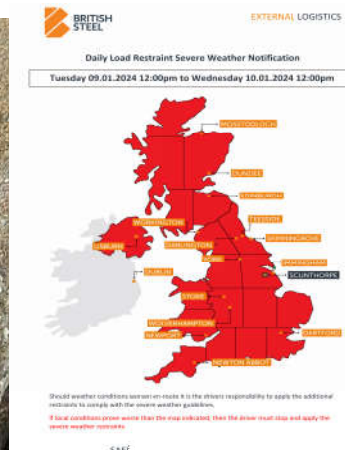


LOAD SHIFT LOAD RESTRAINT GUIDANCE NOT ADHERED TO

What's happened: After loading a driver has left site and after approximately 1 mile, at a roundabout, a 3rd party vehicle has cut across the truck causing the driver to brake heavily. Billets have moved forward breaking the false headboard and moving up to the trailer headboard. One headboard strap parted. Driver returned to site to have load readjusted and then continued his journey. Winter Weather bulletin advised extra ASM be used between product and base timber.



SAFF

5. Winter weather advisory periods

During winter weather advisory periods, anti-slip matting must be placed on BOTH sides of all base timbers.

Load	15 tonnes	20 tonnes	26 tonnes
Forwards blocking + Opposing loops	2	3	4

During severe winter weather advisory periods + ASM both sides of base timbers

Findings :

False Headboard arrangement not fully compliant – Anti-slip matting not applied underneath the short longitudinal timbers that support the longer transverse timbers. Evidence that one of the straps pulling back the false headboard timbers was badly worn. Winter Weather Bulletin not seen so extra ASM not used on top of base timbers.

Recommendations:

- ✓ Always follow the Load Restraint Guidance (LRG) where issued.
- ✓ Ensure Anti-slip Matting is placed as per the LRG.
- ✓ Always Check with Sites if Winter Weather Restraint is needed **before loading.**
- ✓ Never use substandard equipment – if in doubt replace with new.

SCAN ME



✓ Always take photos once load is secured to confirm how the load left site,



<https://britishsteel.co.uk/who-we-are/transport-logistics/>