

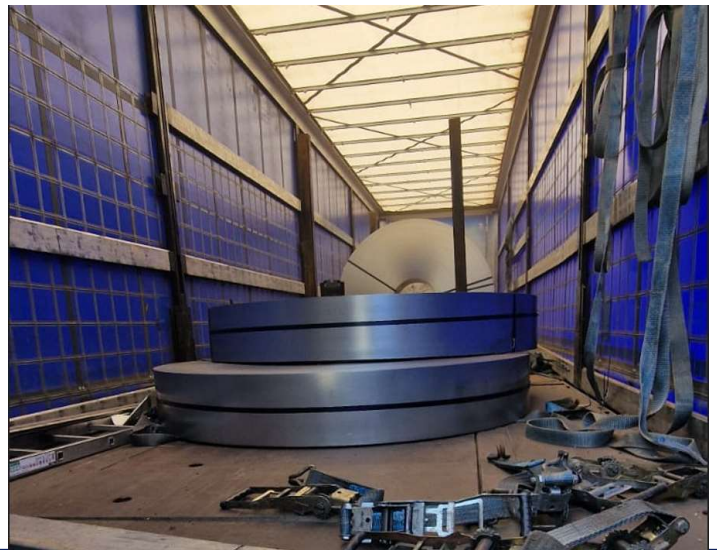
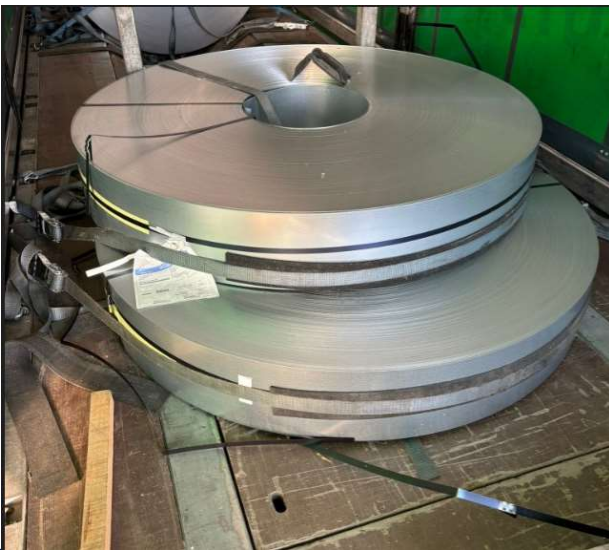
REARWARDS TOPPLED SLIT COILS

What's happened:

Recently 2 incidents occurred with slit coils in the coil well toppling backwards in transport.

Both loads were collected at Tata Steel Maastricht.

The coils were not adequately secured as per Tata Steel TAD (Technical Advice Document).



Findings:

Both identical loads were collected at the same location for the same customer.

No personal injuries occurred.

Loads were not secured as per (TAD – Technical Advice Document) TAD-0074 Narrow Coil in well.

Actions:

- ✓ Please share “TAD-0074 Narrow Coil in Well” document to drivers collecting slit coils in Maastricht.

<https://www.tatasteeleurope.com/sites/default/files/TAD-0074%20Narrow%20Coil%20in%20Well%20Issue%201.pdf>

- ✓ Drivers collecting slit coils may only leave the loading location after approval by surveyor.