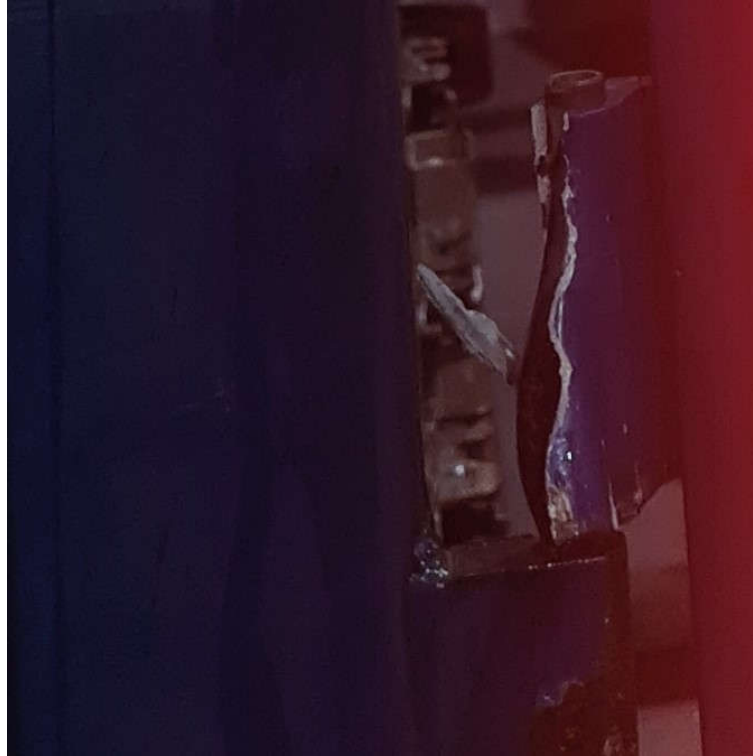


## NEAR MISS TRAILER DOOR DEFECT

**Issue** – during loading as loader opened near side trailer door it was observed that the bottom hinge was severely damaged and a risk to safety.



- **DRIVERS MUST CHECK:**

- Is my equipment in a good condition?
  - Do my trailer doors open and close easily?
  - Are the hinges in good working order?
  - Does my roof open and close easily?
  - Are the roof supports in good working order?
  - Are curtain poles fixed into the curtain?
  - Are my curtains and roof free from holes?
  - Is my trailer bed dry, clean and tidy?

**If the answer to any of the above is NO:**

- Driver must report the defect in line with Hauliers own Defect Reporting procedure and arrange for the repair
- Only arrive for collection/drop off once trailer is rectified and is fit for purpose to avoid trailer being rejected for loading.

**NOT REPORTING DEFECTS LEADS TO THE NEXT PERSON HAVING AN INJURY – LOOK AFTER YOURSELF AND YOUR FELLOW WORKERS**