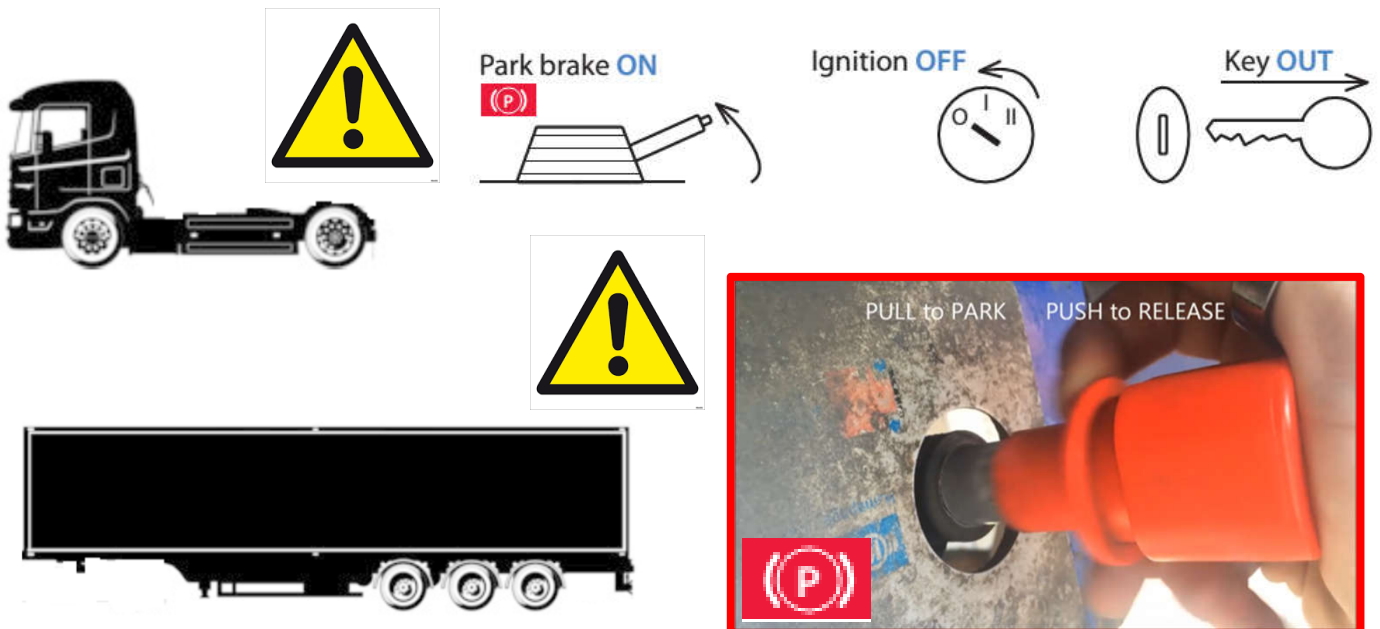


## TRAILER PARK BRAKE BRIEFING - INTERNAL

In 2024 we have seen a large increase in Trailer Park Brakes not being applied.

**YOU MUST FOLLOW THESE RULES WHEN WORKING ON BRITISH STEEL SITES AND SIGN TO CONFIRM YOU WILL COMPLY WITH THESE RULES**

1. Tractor unit park brake **must** be applied, the engine switched off and ignition keys removed before leaving cab.
2. Trailers being delivered to site loaded / empty – trailer parking brake **must** be applied manually before de-coupling.
3. All trailers being collected from site – **check** trailer parking brake is on **before** engaging 5<sup>th</sup> wheel. If it is not then **report** it to the area supervisor.
4. In the event of a vehicle runaway:
  1. Shout a warning
  2. Keep out of the way
  3. **DO NOT** attempt to access the vehicle until stationary and safe to do so.



DATE	TRACTION	DRIVER NAME	SIGNATURE	SCU CARD NUMBER