



# P&O Driver Safety Standards



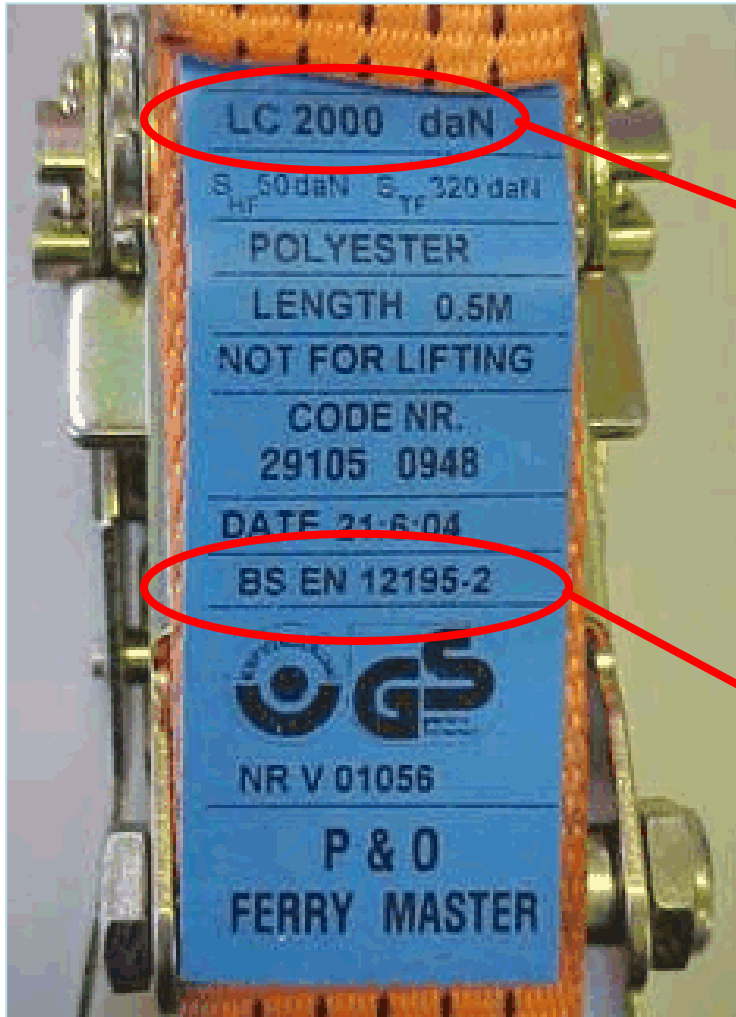


# Personal Protective Equipment

- The Seven items of PPE that every driver should have:

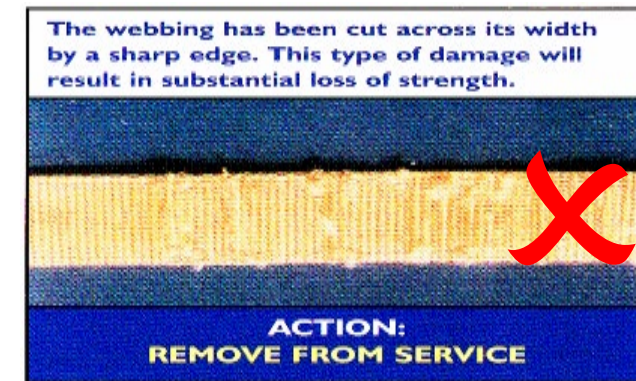
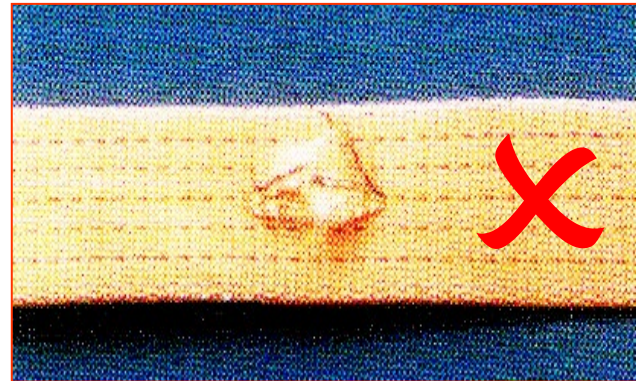


# Strap Condition



Lashing Capacity  
2000 daN – This is  
2ton of Force NOT  
Weight!

Must comply to  
EN 12195-2





# Tractor Unit Standards



Park brake **ON**



Ignition **OFF**



Key **OUT**

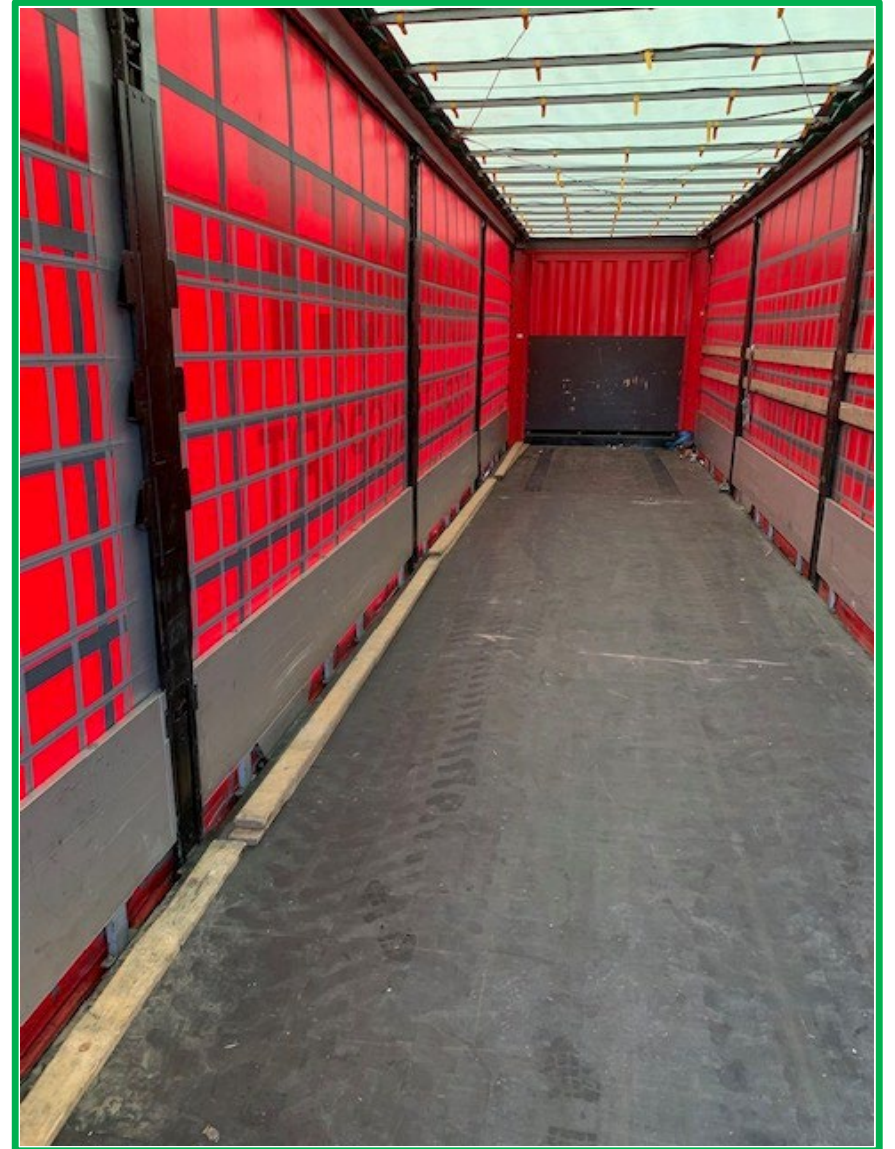


# Trailer park brakes

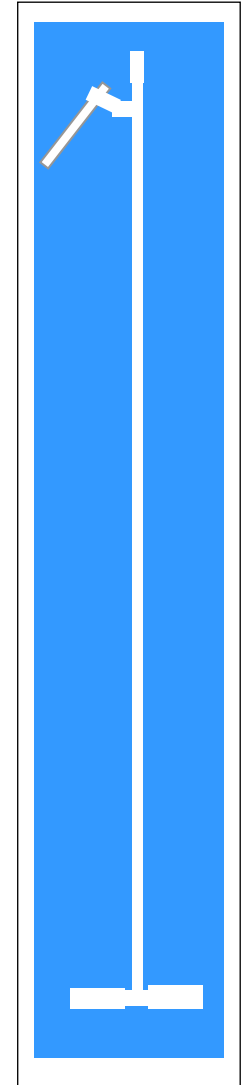




# Trailer Standards



# Equipment Standards - Use roof pole



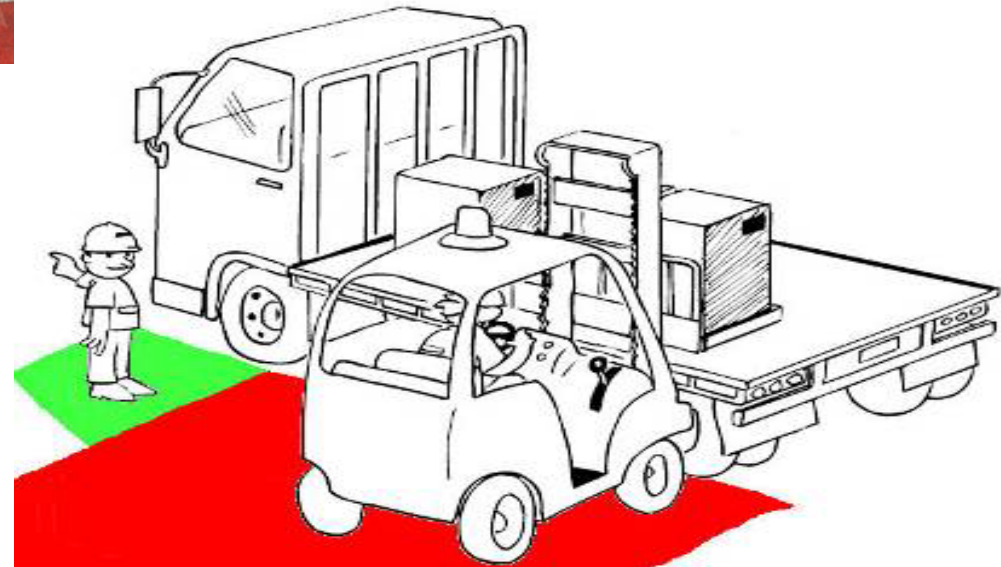


# No Climbing!!





# Driver Safe Zones





**Be kind, courteous and polite at all times!**





The image features a close-up, textured view of a flag with four distinct color sections: blue on the left, white at the top, yellow at the bottom, and red on the right. The fabric has a fine, woven texture. The word "END" is centered in the white section.

**END**