



P&O Driver Safety Standards for British Steel Scunthorpe



Personal Protective Equipment

- The Seven items of PPE that every driver should have:



Arrivals at Rod Mill

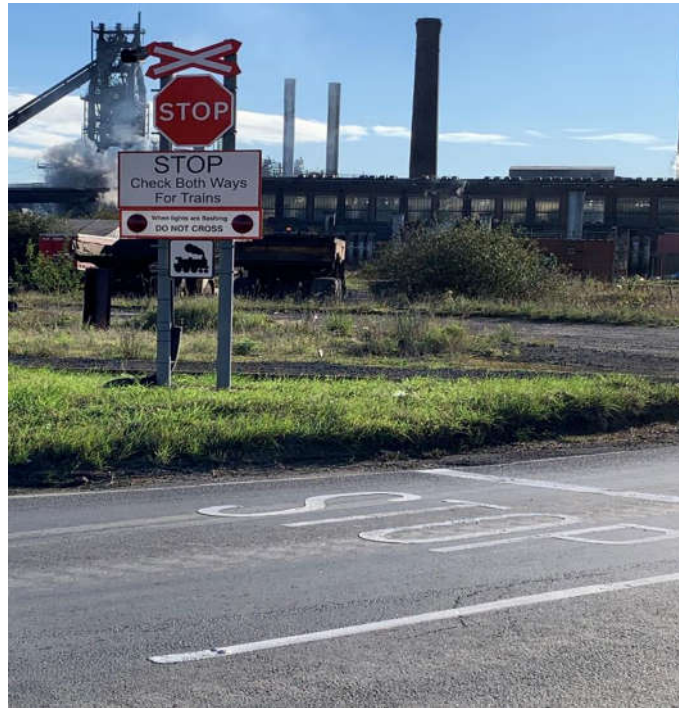


Trailer Park

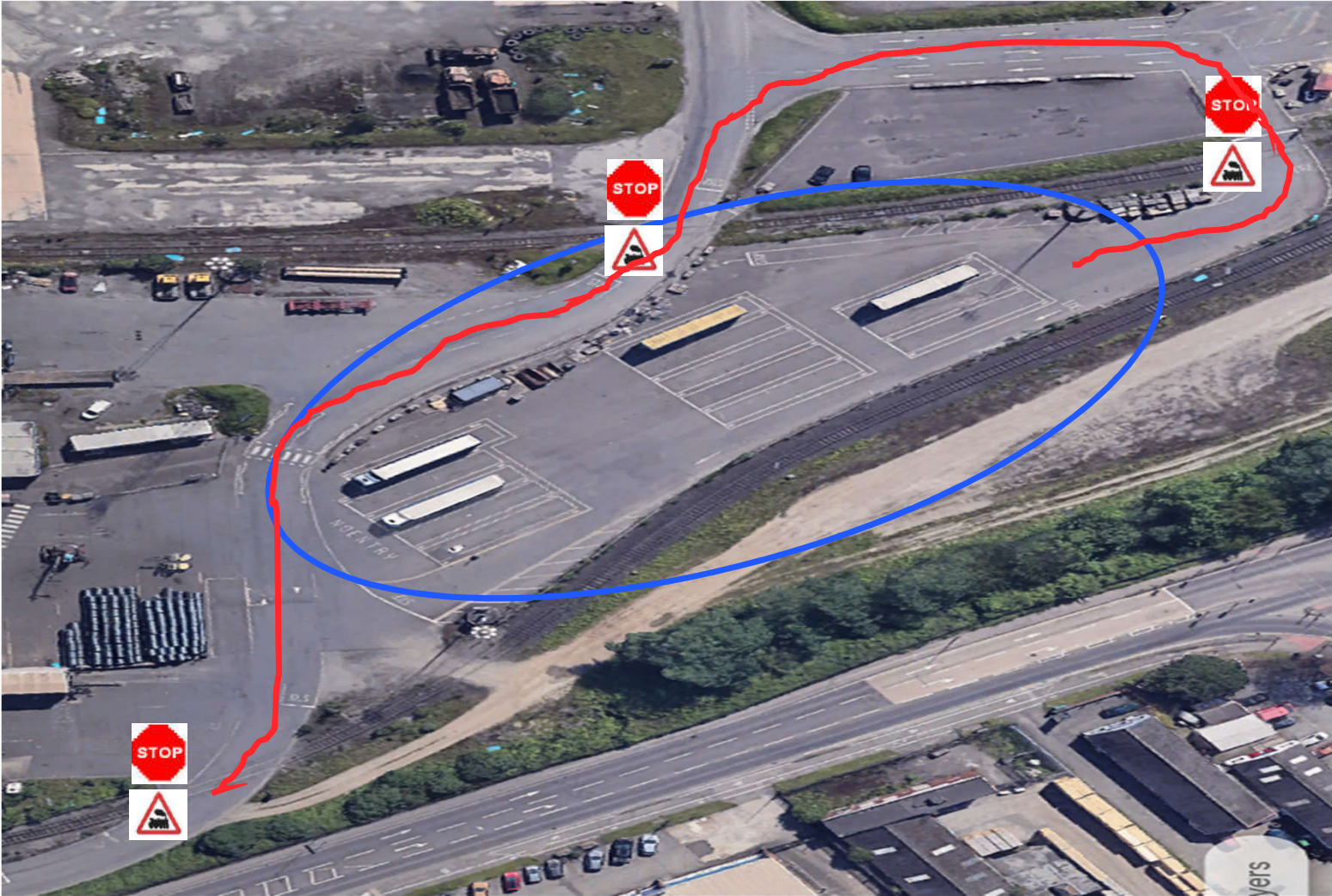


Dispatch Office

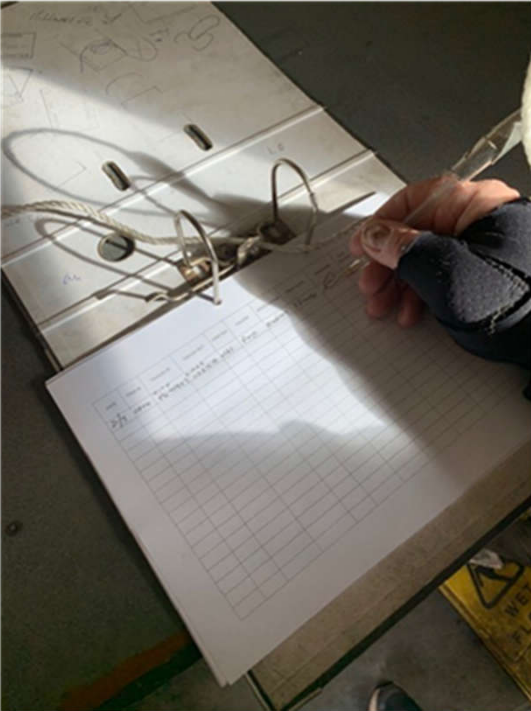
Stop at Rail Crossings



Booking in – park safely on Live load parking area



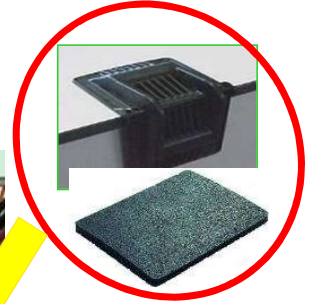
Booking in – sign in and leave induction card



Trailer park brakes



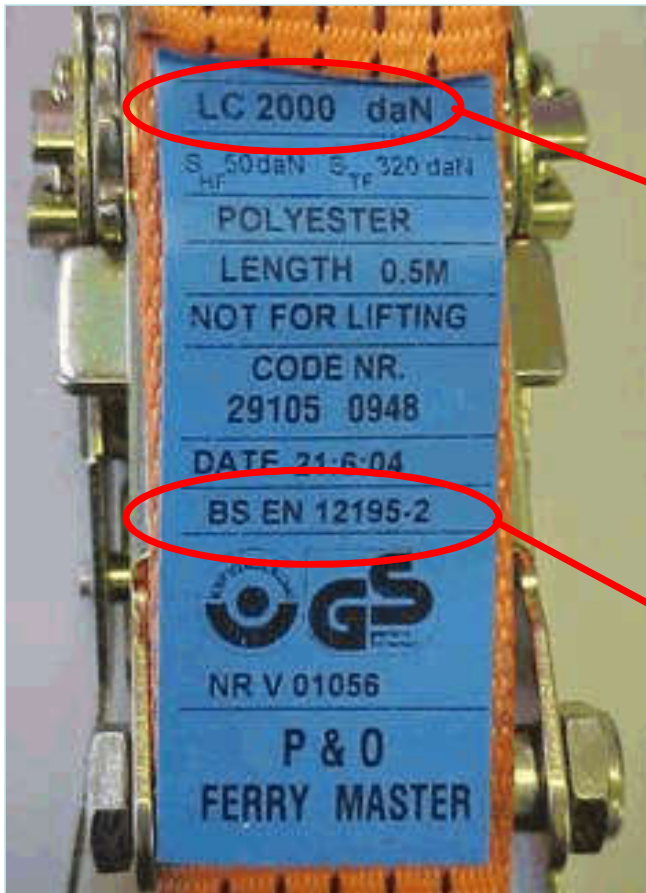
Trailer preparation – empty trailer



No Climbing!!

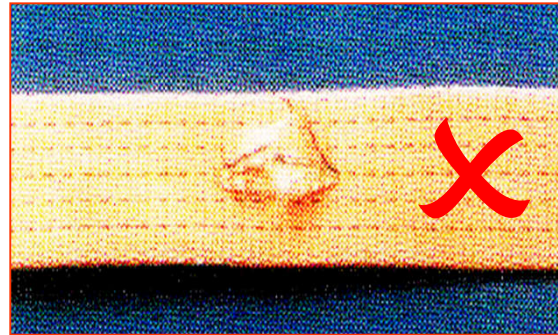


Strap Condition



Lashing Capacity
2000 daN – This is
2ton of Force NOT
Weight!

Must comply to
EN 12195-2



The webbing has been cut across its width by a sharp edge. This type of damage will result in substantial loss of strength.

ACTION:
REMOVE FROM SERVICE



The webbing has been cut and has a frayed edge. This will weaken the webbing substantially

ACTION:
REMOVE FROM SERVICE



Knotted webbing should not be used. A cut lashing should not be joined by knotting.

ACTION:
REMOVE FROM SERVICE

Be kind, courteous and polite at all times!



A close-up photograph of a flag with four distinct color sections: blue on the left, white at the top, red on the right, and yellow at the bottom. The flag has a fine, woven texture. The word "END" is printed in a bold, white, sans-serif font, centered over the blue and white sections.

END