



# **P&O Ferrymasters & British Steel Scunthorpe Redbourn FN Billet Training video**



# Fair Processing Notice

There is a legitimate interest for P&O Ferrymasters - Wherstead house, Wherstead, Ipswich, IP9 2WG to process personal data about you for the purpose of administering the British Steel induction training programme.

The personal data processed includes your name, company name and date of induction training. Your personal data will be shared with British Steel for the purpose of demonstrating the competence and understanding of site rules of drivers coming to site and will not be shared with any other third party. This information is held for as long as the driver is still active on British Steel Scunthorpe site and is then disposed of (electronically deleted) once notification is received the driver will no longer visit the site.

You have the right to request access to, rectification or erasure of, restriction of processing of, object to processing of your personal data by us and to submit a data portability request by contacting our Data Protection Officer at the above address or by email [enquiries@pofm.com](mailto:enquiries@pofm.com). If you believe that your personal data is being processed in any manner which is incompatible with the information provided in this privacy statement, you have the right to lodge a complaint with the ICO at [www.ico.org.uk](http://www.ico.org.uk).

# Personal Protective Equipment



- Personal Protective Equipment – examples of what is NOT ALLOWED:



# Personal Protective Equipment

- The Seven items of PPE that every driver should have:

Safety helmet with Chin strap fitted



Safety glasses



Ear Defenders



High Visibility jacket or vest



Safety Gloves



Arms covered & Long trousers



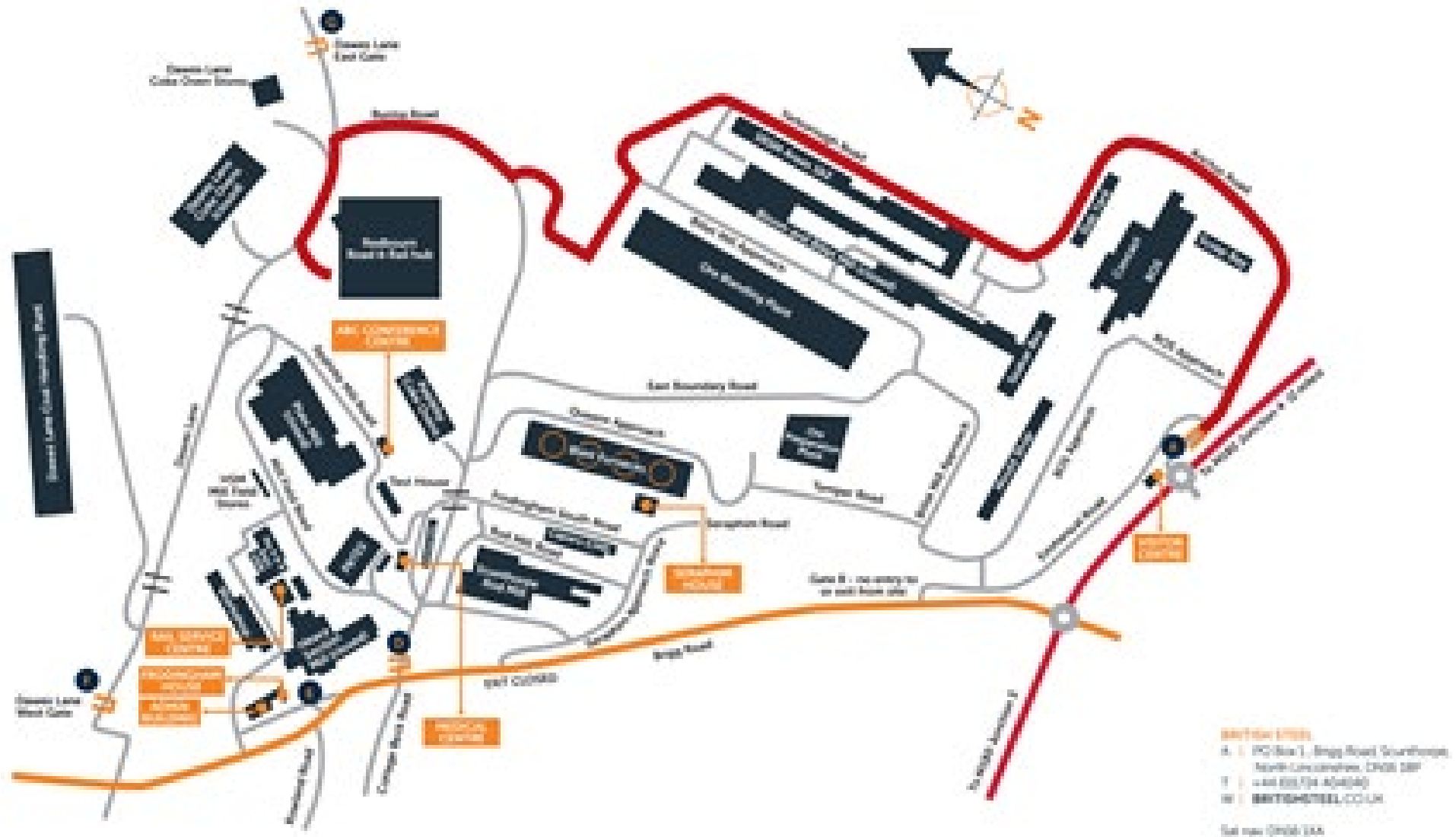
Safety Boots



NOT ALLOWED



# Arrivals at Redbourn



# Stop at Rail Crossings



# Question 1



Click on the correct image  
to proceed



# Booking in – report to Despatch office





# Booking in – sign in and leave induction card



# Drive to loading point



Key: Trailer Prep and Timber Storage = ■

Waiting Area = ■

Driver Safe Haven = ■

Loading Area =

Securing Area = ■

Edge Protection Store = from Gate A at present

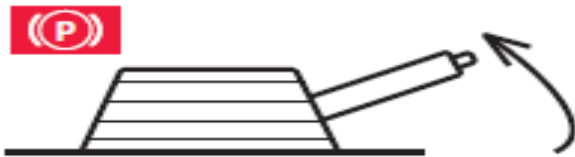
# Applying truck hand brake



# Tractor unit standards



Park brake **ON**



Ignition **OFF**



Key **OUT**



# Trailer preparation – open curtains and tie back at back doors



# Trailer preparation – locate timbers and anti slip matting



**Get 5 X Large Timbers and 2 X Short Timbers**



**Get 8 X Anti-slip Matting Place under base timbers( on top ALSO in Winter Weather Period)**

# Trailer preparation - lay anti slip matting and timbers



# Trailer preparation – drive forward into loading area and wait in Driver Safe Haven

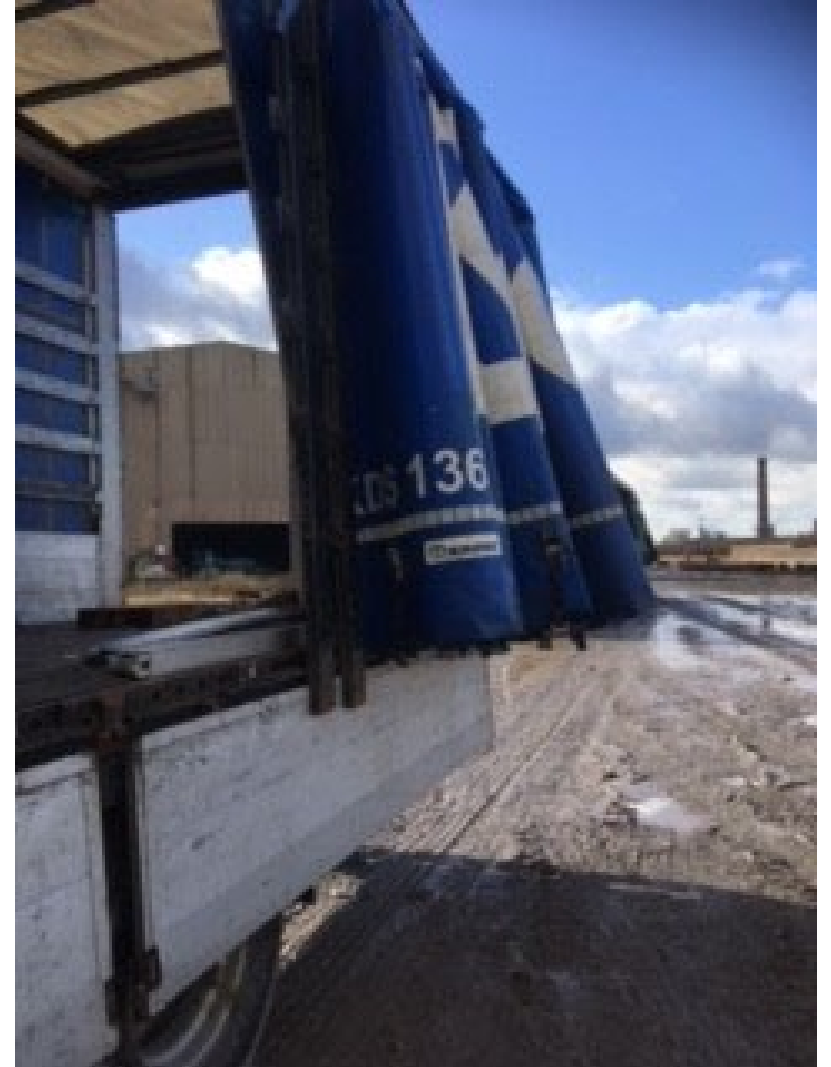




# Question 2



Click on the correct image to proceed



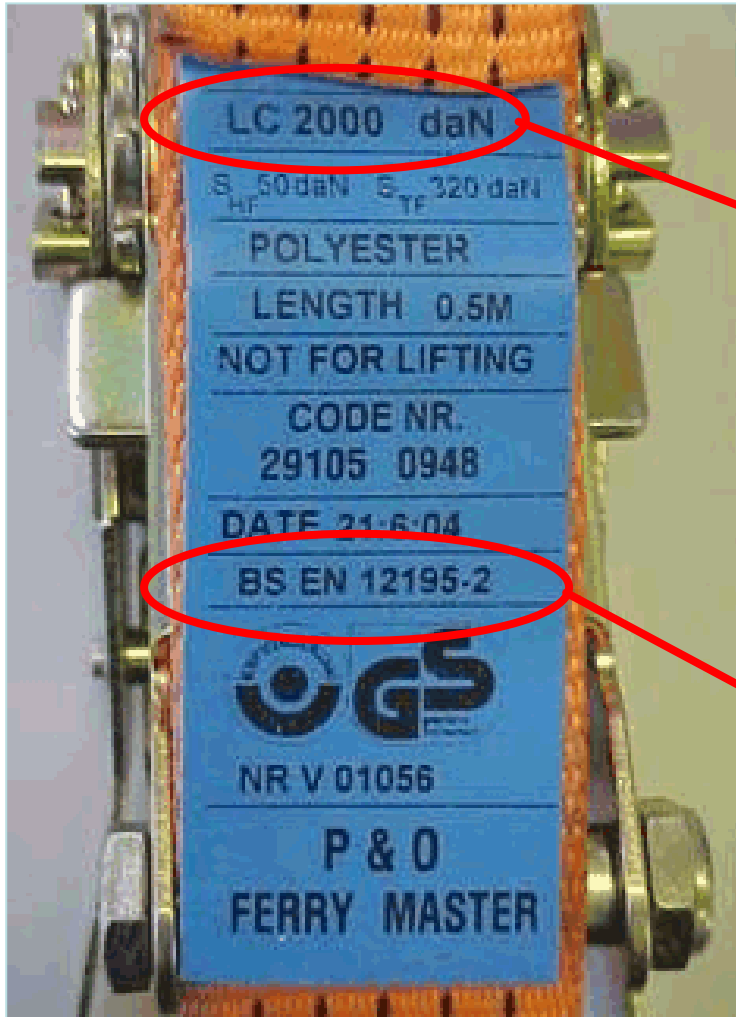
# No Climbing!!



# Securing

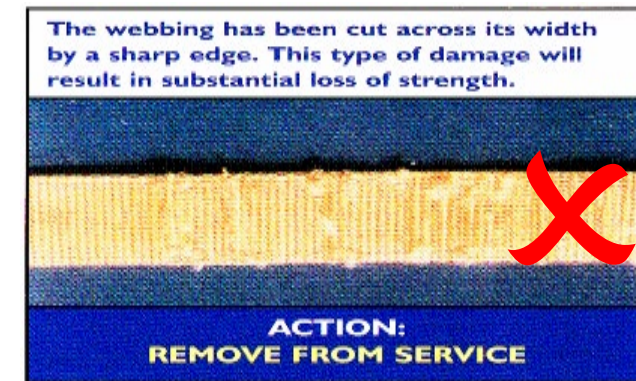
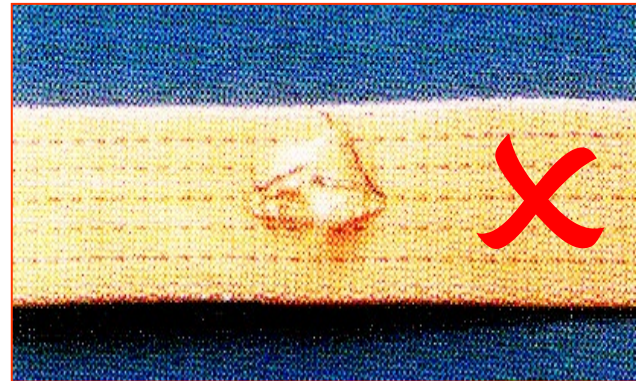


# Strap Condition



Lashing Capacity  
2000 daN – This is  
2ton of Force NOT  
Weight!

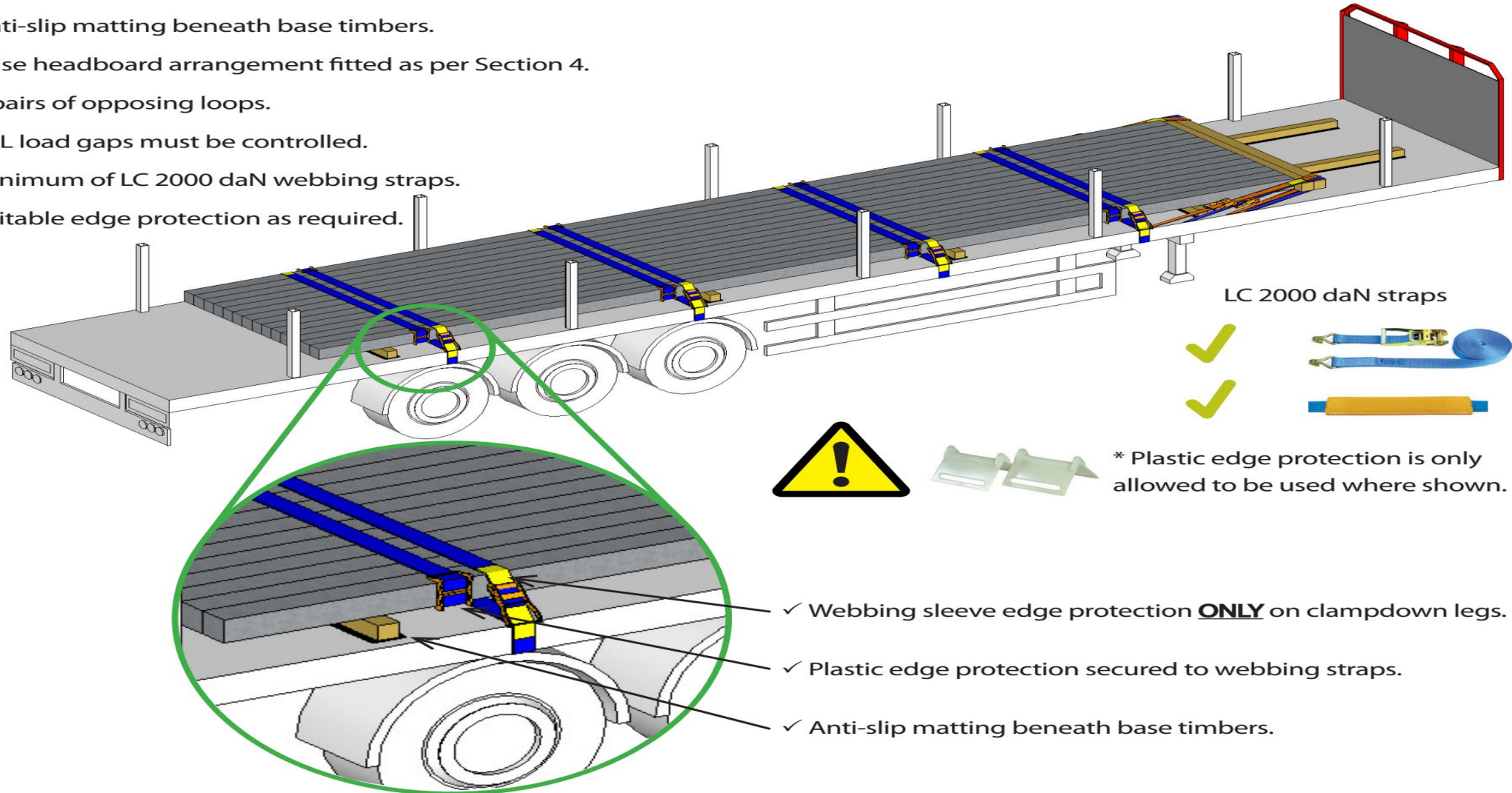
Must comply to  
EN 12195-2



# Securing

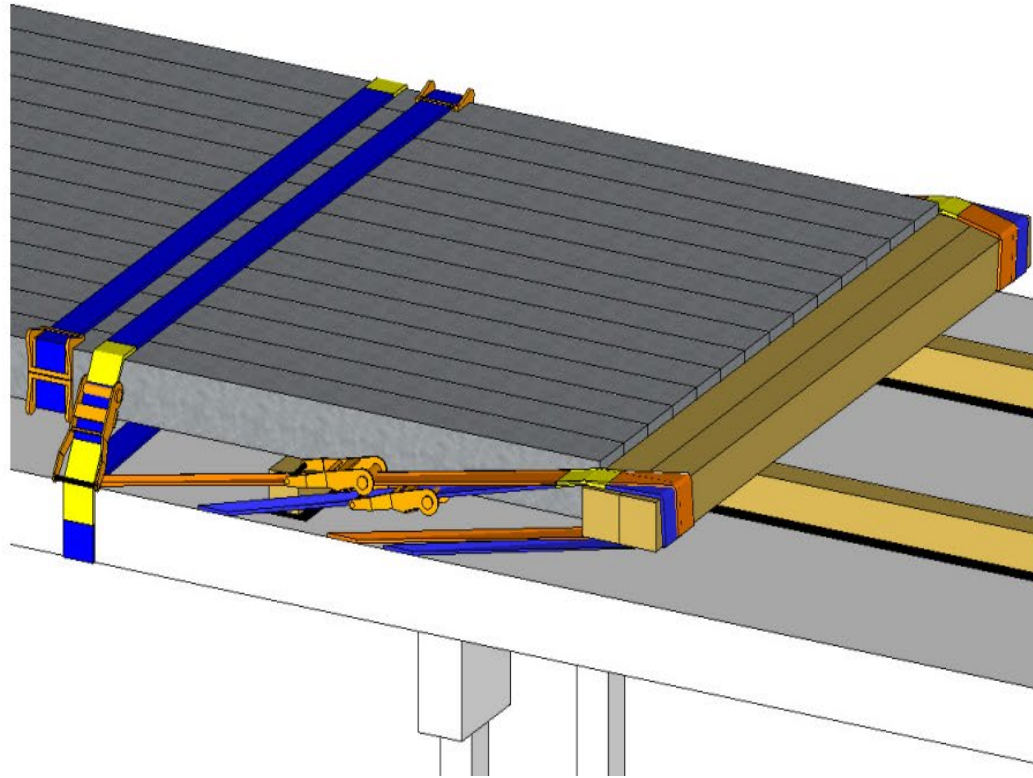
## 3.1 Timber frame false headboard

- ✓ Anti-slip matting beneath base timbers.
- ✓ False headboard arrangement fitted as per Section 4.
- ✓ 4 pairs of opposing loops.
- ✓ ALL load gaps must be controlled.
- ✓ Minimum of LC 2000 daN webbing straps.
- ✓ Suitable edge protection as required.



# Securing

## 4. False headboard arrangement



- ✓ Anti-slip matting beneath supporting timbers.
- ✓ 2 off timbers with a minimum cross section of 125mm x 125mm must be used.
- ✓ 4 webbing straps pulling rearwards (2 on each side the of load).
- ✓ Minimum of LC 2000 daN webbing straps.
- ✓ Webbing sleeve edge protection as required.
- ✓ Minimize gaps between product and blocking arrangement.

# Securing – Load restraint Guideline



<https://britishsteel.co.uk/who-we-are/transport-logistics/>

# Collecting paperwork

DISPATCH NOTE

WATERLOO STEEL LIMITED  
Bourneville Road MB  
P.O. Box 5  
Ridge Road  
Birmingham  
North Lincolnshire DN16 5BP  
Tel: +44 (0) 1724 860000  
Fax: +44 (0) 1724 351430

Job No: 100171313 5 MACH'S 5 11000 20  
4151 MACH'S 5 11000 20  
1751 515000 20  
1752 17500

Order: 100171313 5 MACH'S 5 11000 20  
1751 515000 20  
1752 17500

Work Order: 100171313 5 MACH'S 5 11000 20  
1751 515000 20  
1752 17500

Job Status: 100171313 5 MACH'S 5 11000 20  
1751 515000 20  
1752 17500

Lot Number	Weight	Lot Number	Weight	Lot Number
100171313	1.000	100171313	1.000	
100171313	1.000	100171313	1.000	
100171313	1.000	100171313	1.000	
100171313	1.000	100171313	1.000	
100171313	1.000	100171313	1.000	
100171313	1.000	100171313	1.000	

Weight Total: 22.134

Customer Order Number: 100171313





# Question 3

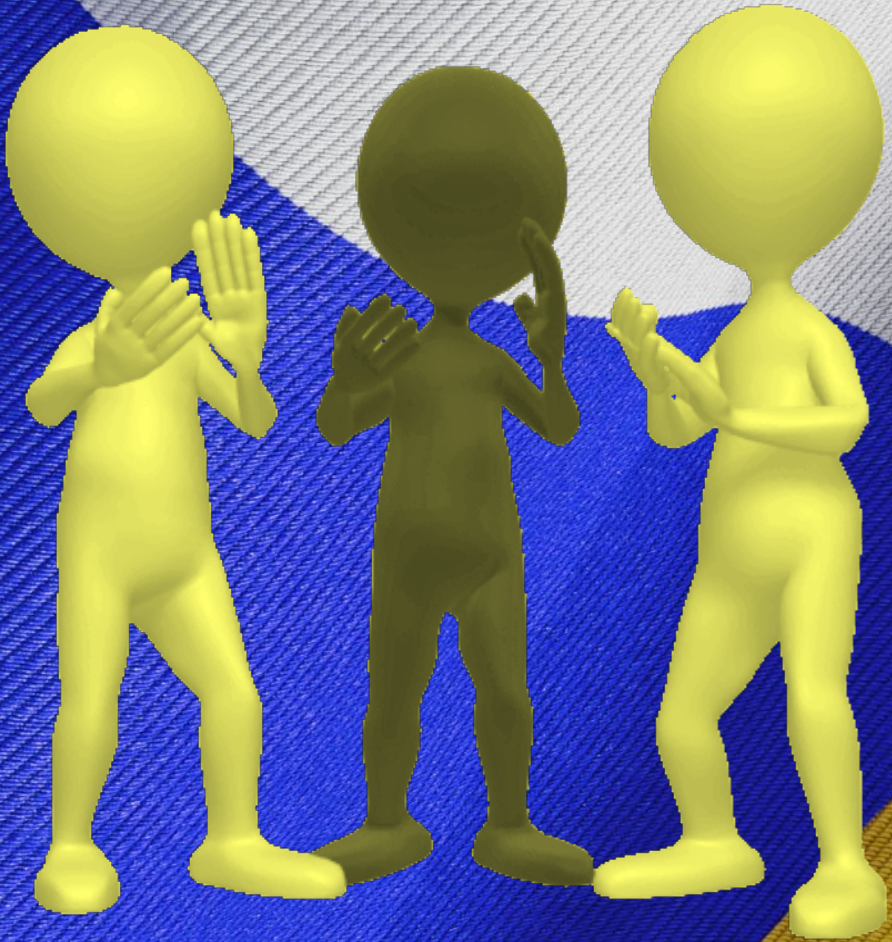


Click on the correct image to proceed



**Be kind, courteous and polite at all times!**





**Well done  
and  
thank you.**

# PPE Q1 Wrong answer



Oops! Try again...



**NEXT**

## Q2 Wrong answer



Oops! Try again...



**NEXT**

## Q3 Wrong answer



Oops! Try again...



**NEXT**

# PPE Q1 Correct answer



Well done

**NEXT**

Booking in



## Q2 Correct answer



Well done

NEXT





## Q3 Correct answer



Well done

**NEXT**

