

Scunthorpe Rod Mill – Dropping Empty Trailer

DO NOT GO DIRECT TO TRAILER PARK! Arrive at Despatch office for booking in onto site in your PPE and leave Induction Card with the Safety Inspectors



Leave empty trailer with:-



- ✓ Trailer Parked in a Marked Bay only
 - ✓ Timbers removed from left side of trailer and left neatly stacked on bed on **left side only**
 - ✓ Edge protection/ Anti-slip matting to be left
- Neat and Tidy on the Trailer RIGHT SIDE ONLY**



- ✓ Straps rolled up and left tidy at rear or on the side (**not tucked into curtains**)
- ✓ Trailer floor clear of waste **and** Dunnage
- ✓ Remove TIR cords on both sides
- ✓ Curtains un-buckled and pulled closed



Engine must be OFF!

Keys OUT!



Scunthorpe Rod Mill– Collecting loaded trailer



Arrive at Despatch office for booking in onto site leave your Induction card with the Safety Inspectors.

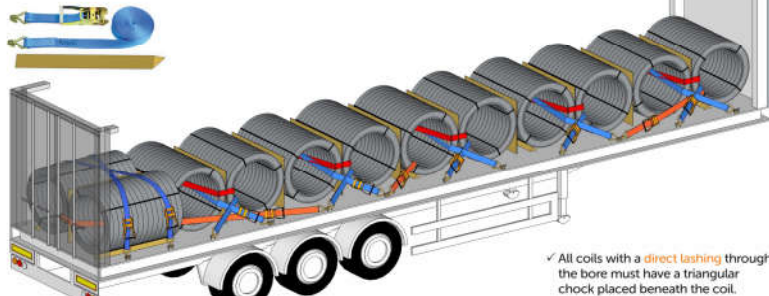
Arrive at trailer park dressed in FULL PPE



- **Collecting Loaded Trailer:- No Climbing on Loaded Trailers!**

3. Overview of different strapping arrangements for curtainsider loads

3.1 10 cross-loaded and 2 gun barrel coils on Code XL rated trailer



- Strap load as per guideline (see left) and check straps are tight
- Buckle up curtains
- Remain in PPE to collect notes from despatch
- **'Yellow' Loaded Trailer Tag** to be returned to despatch office on completion.



Collecting loaded trailer :-

- If a driver has any problems whilst on site with a loaded trailer then please report to the Despatch office and/ or Safety Inspectors.
- Help and assistance will be given but please be patient until time allows i.e. If you are unsure of securing method/ where to park.

• **All loads must be fully strapped in the Trailer Parks. Driver Handout available from Meet and Greet.**

• **Loads may be checked before leaving for correct placement of ratchets!**



 the **sense** of logistics