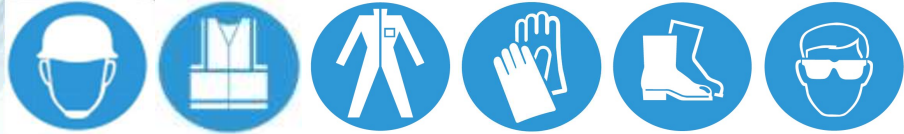
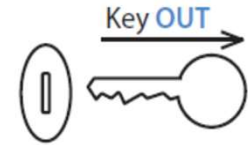
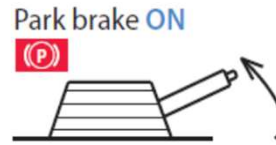


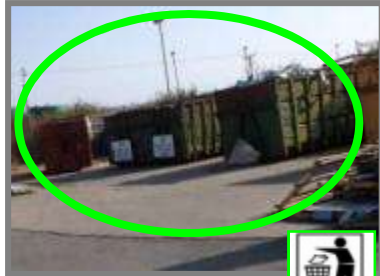
Kingspan – Dropping Stand Trailers



Book in at Gatehouse and put on required PPE



Apply park brake, turn engine off and remove keys from ignition



Place rubbish in designated waste area



Park trailer in trailer park with 1 meter gap either side



Apply "PARK" brake at all times



Remove TIR cord and stow away on the holder



Take out timber tilt boards. Lay them out diagonally down the length of the trailer bed



Trailer **MUST NOT** be left in this condition. **All** boards are to be removed



Open curtains to the rear. Secure back with Spanset and ratchet