

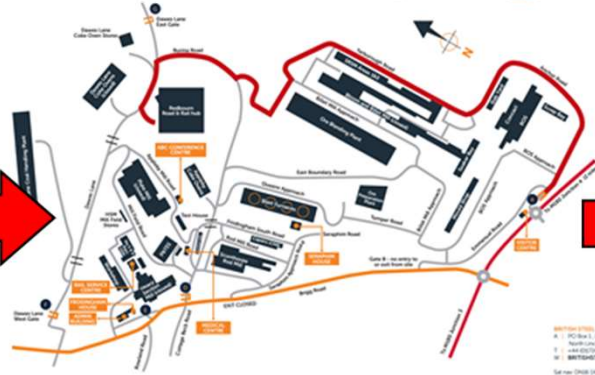
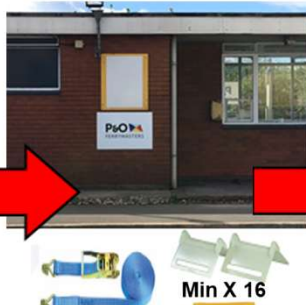


Redbourn FN Billet



1

Obtain Site induction
PO Training Card



BOOK IN/ OUT



2



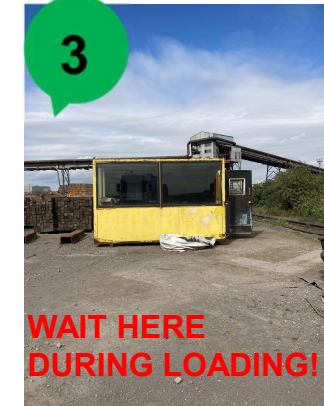
Get 5 X Large Timbers and 2 X Short Timbers



Get 8 X Anti-slip Matting Place under base timbers (on top ALSO in Winter Weather Period)



WAIT!
UNTIL
LOADING
AREA
CLEAR



3

WAIT HERE DURING LOADING!



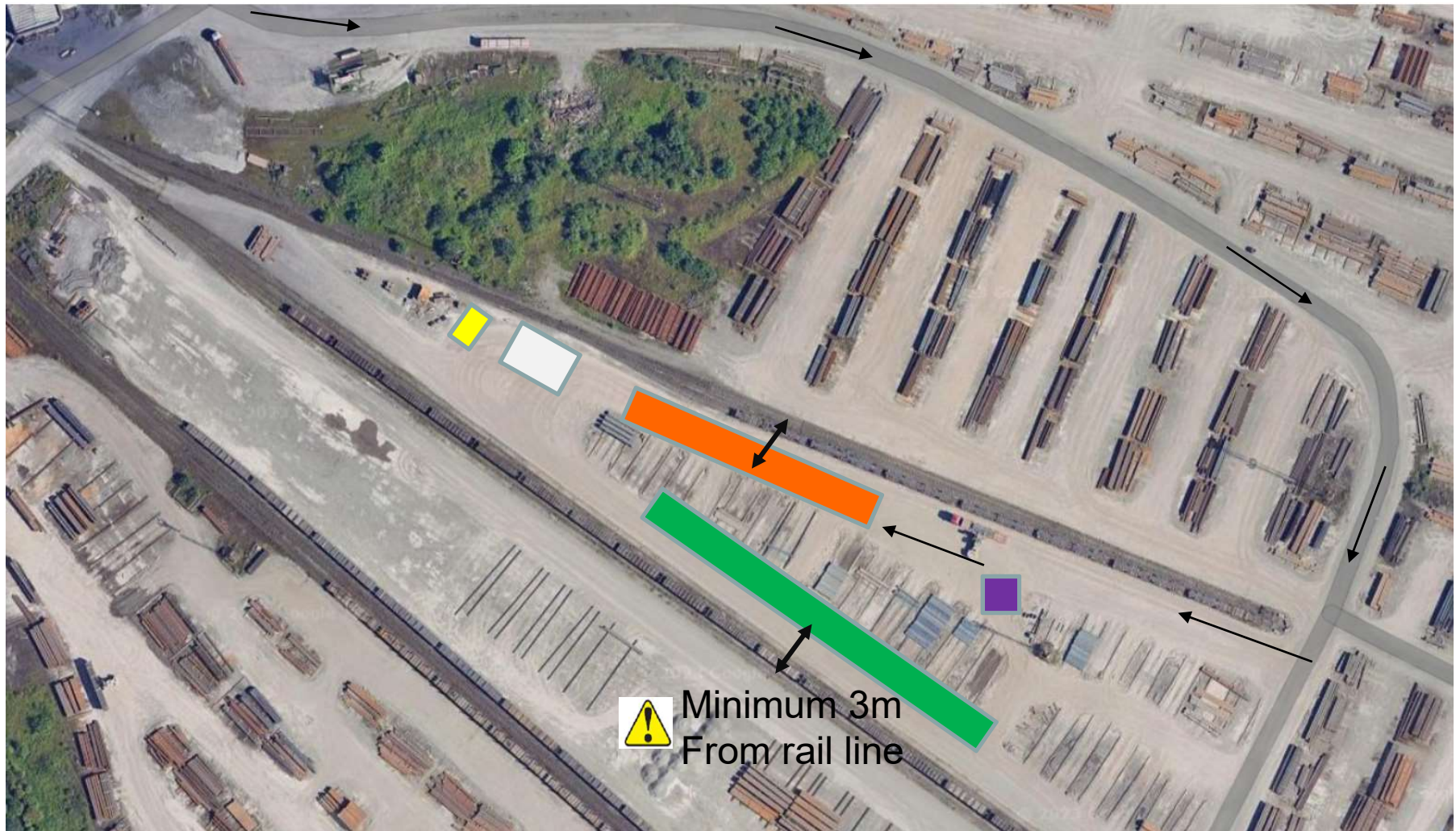
PTO For LRG



BOOK OUT/
COLLECT
PAPERWORK



Redbourn Layout



Key: Trailer Prep and Timber Storage = 

Waiting Area = 

Driver Safe Haven = 

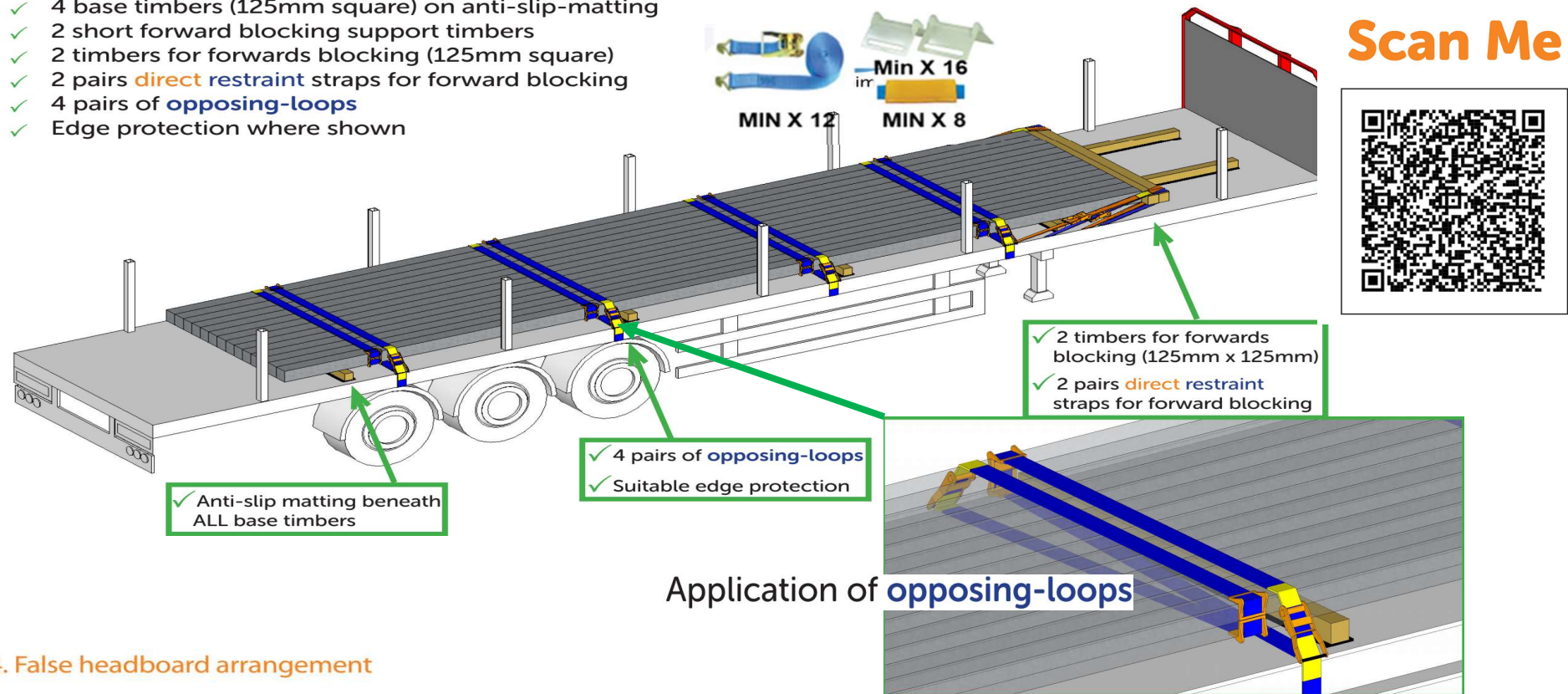
Loading Area = 

Securing Area = 

Edge Protection Store = from Gate A at present

Load Restraint Requirements

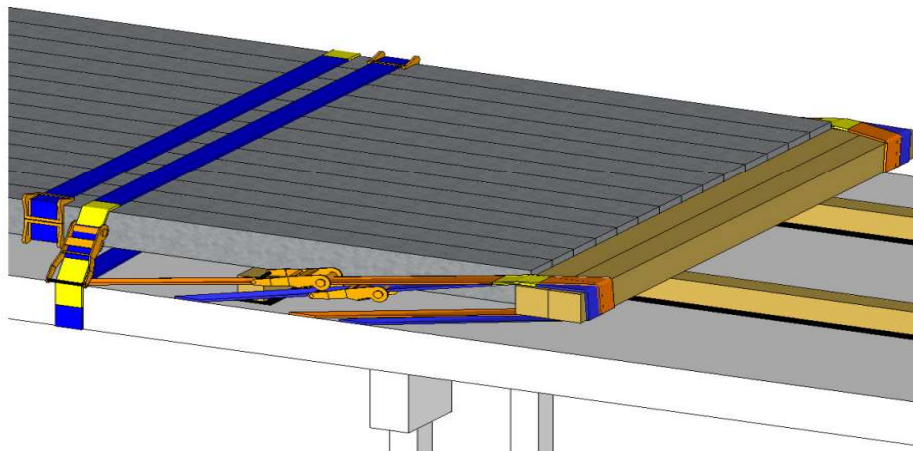
- ✓ 4 base timbers (125mm square) on anti-slip-matting
- ✓ 2 short forward blocking support timbers
- ✓ 2 timbers for forwards blocking (125mm square)
- ✓ 2 pairs **direct restraint** straps for forward blocking
- ✓ 4 pairs of **opposing-loops**
- ✓ Edge protection where shown



Application of opposing-loops

4. False headboard arrangement

WINTER WEATHER PERIOD 1st November to 31st March Apply Anti-slip Matting to both sides of ALL the Timbers



- ✓ Anti-slip matting beneath supporting timbers.
- ✓ 2 off timbers with a minimum cross section of 125mm x 125mm must be used.
- ✓ 4 webbing straps pulling rearwards (2 on each side the of load).
- ✓ Minimum of LC 2000 daN webbing straps.
- ✓ Webbing sleeve edge protection as required.
- ✓ Minimize gaps between product and blocking arrangement.