



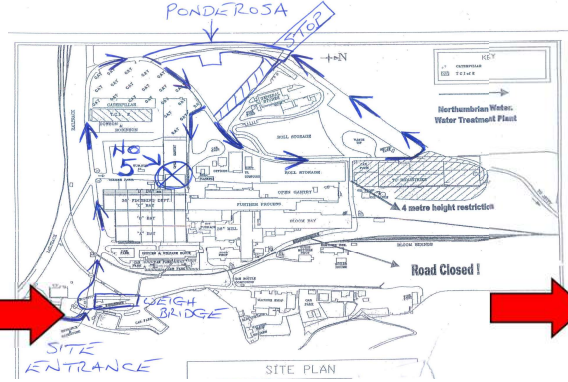
# Skinninggrove FN Billet



1



**Weigh ON/ Obtain Site induction**



**Collect from Weighbridge**



**STOP! At Trailer Prep see slide below - Wear Full PPE**



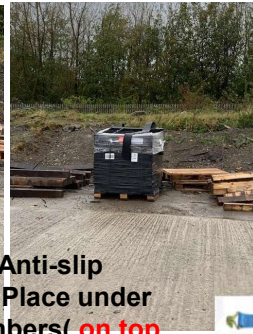
2



**Get 5 X Large Timbers and 2 X Short Timbers**



**Get 8 X Anti-slip Matting Place under base timbers (on top ALSO in Winter Weather Period)**



**WAIT! UNTIL LOADING AREA CLEAR!**

3



**WAIT HERE DURING LOADING!**








**Move forward to strap load**



**WEIGH OFF**

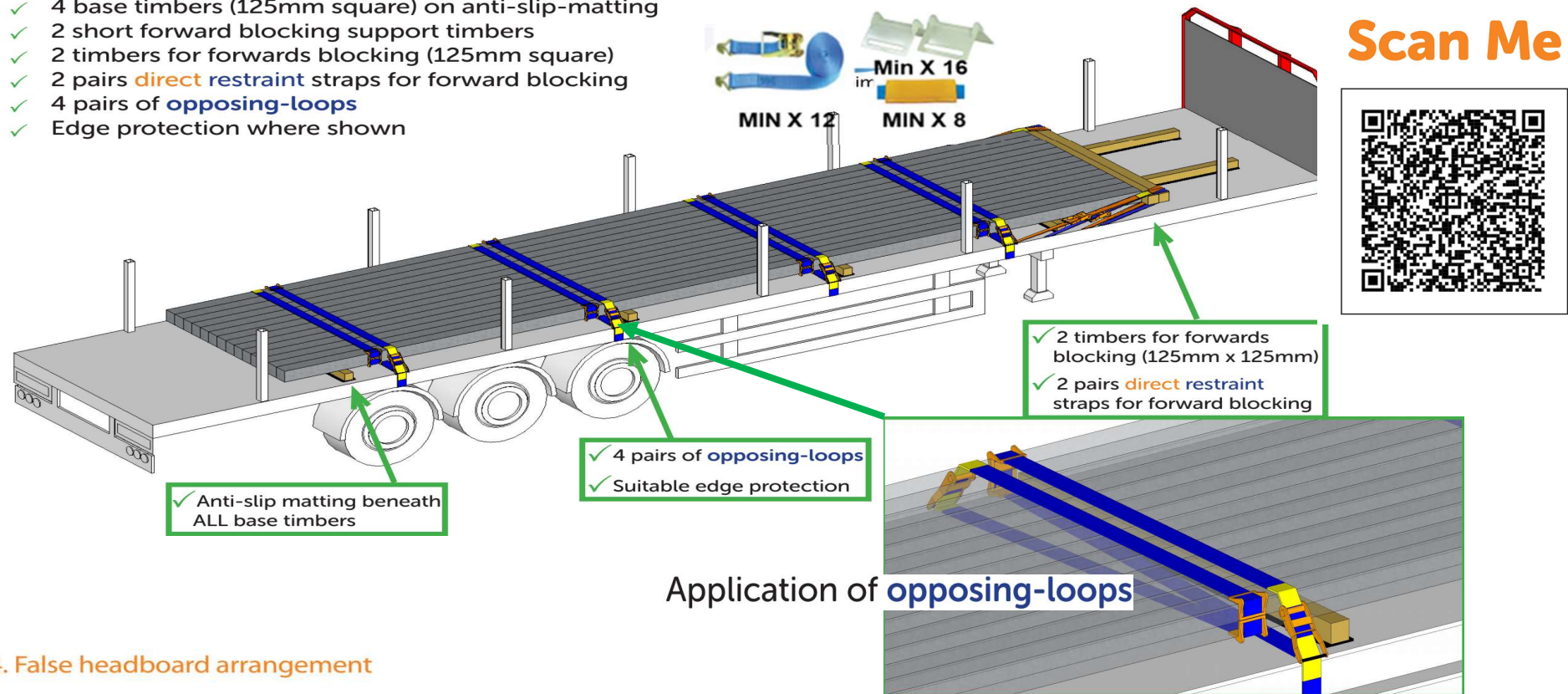
# Ponderosa current layout



- Key: Trailer Prep and Timber Storage = 
- Cabin = 
- Driver Safe Haven = 
- Edge Protection Storage = 
- Securing Area = 

## Load Restraint Requirements

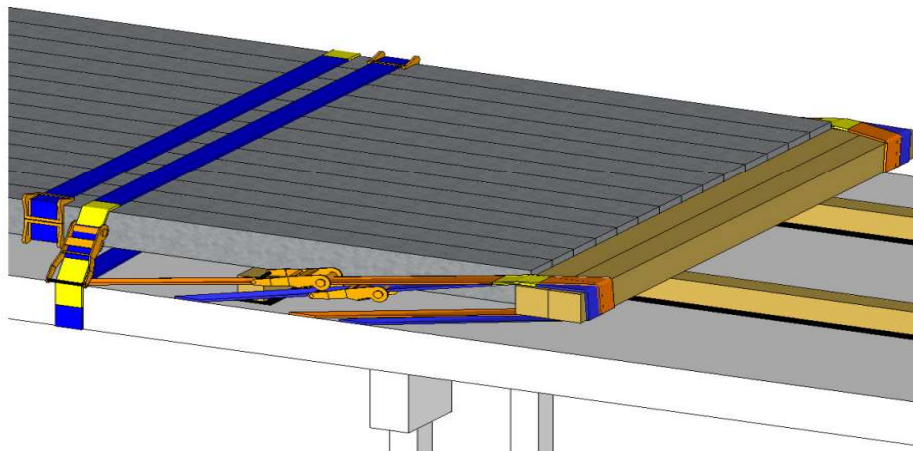
- ✓ 4 base timbers (125mm square) on anti-slip-matting
- ✓ 2 short forward blocking support timbers
- ✓ 2 timbers for forwards blocking (125mm square)
- ✓ 2 pairs **direct restraint** straps for forward blocking
- ✓ 4 pairs of **opposing-loops**
- ✓ Edge protection where shown



## Application of opposing-loops

### 4. False headboard arrangement

**WINTER WEATHER PERIOD 1<sup>st</sup> November to 31<sup>st</sup> March Apply Anti-slip Matting to both sides of ALL the Timbers**



- ✓ Anti-slip matting beneath supporting timbers.
- ✓ 2 off timbers with a minimum cross section of 125mm x 125mm must be used.
- ✓ 4 webbing straps pulling rearwards (2 on each side the of load).
- ✓ Minimum of LC 2000 daN webbing straps.
- ✓ Webbing sleeve edge protection as required.
- ✓ Minimize gaps between product and blocking arrangement.